

\$19,900 - 18, 6026 13 Avenue, Edson

MLS® #A2233470

\$19,900

2 Bedroom, 1.00 Bathroom, 896 sqft

Mobile on 0.00 Acres

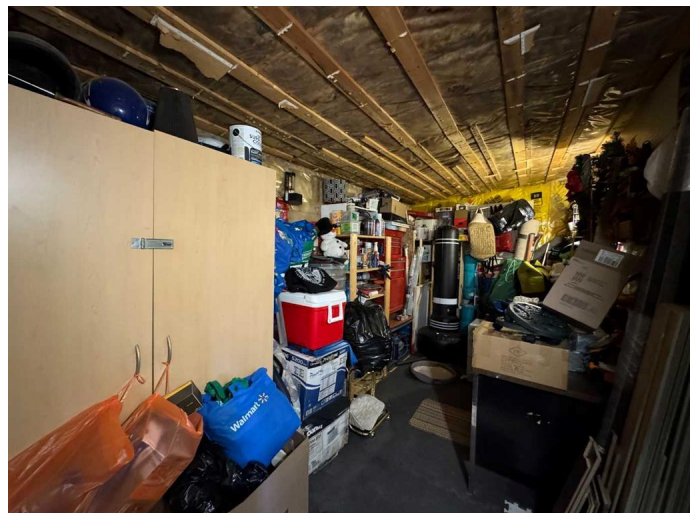
NONE, Edson, Alberta

Affordable, Cute and Comfortable 2 bedroom mobile home in Poplar Place! Large mudroom, open concept kitchen/dining/living space. Laundry room/pantry space. 2nd bedroom is very spacious (combined 2nd and 3rd bedroom into one big bedroom). Primary bedroom is spacious and has a door to the main bathroom. Main bathroom has update shower with glass door and is accessible from hallway and primary bedroom. Updates include: laminate flooring, furnace motor, shower, tin roof on car port. Backyard is fenced. Storage shed included. Poplar Place is in a great location. Next to walking trails, parks, play grounds, close by to schools of all levels, rec center/pool, shopping, grocery, medical and other amenities. Lot rent is currently \$520 per month.

Built in 1972

Essential Information

MLS® #	A2233470
Price	\$19,900
Bedrooms	2
Bathrooms	1.00
Full Baths	1
Square Footage	896
Acres	0.00
Year Built	1972
Type	Mobile



Sub-Type	Mobile
Style	Single Wide Mobile Home
Status	Active

Community Information

Address	18, 6026 13 Avenue
Subdivision	NONE
City	Edson
County	Yellowhead County
Province	Alberta
Postal Code	T7E 1N5

Amenities

Parking Spaces	2
Parking	Off Street, Attached Carport

Interior

Appliances	Dryer, Range, Range Hood, Refrigerator, Washer, Window Coverings, Portable Dishwasher
Heating	Forced Air, Natural Gas

Exterior

Roof	Metal
------	-------

Additional Information

Date Listed	June 21st, 2025
Days on Market	7

Listing Details

Listing Office	CENTURY 21 TWIN REALTY
----------------	------------------------

Data is supplied by Pillar 9â„¢ MLSÂ® System. Pillar 9â„¢ is the owner of the copyright in its MLSÂ® System. Data is deemed reliable but is not guaranteed accurate by Pillar 9â„¢. The trademarks MLSÂ®, Multiple Listing ServiceÂ® and the associated logos are owned by The Canadian Real Estate Association (CREA) and identify the quality of services provided by real estate professionals who are members of CREA. Used under license.