

\$1,850 - 957 15 Street S, Lethbridge

MLS® #A2233157

\$1,850

0 Bedroom, 0.00 Bathroom, 1,295 sqft

Rental on 0.00 Acres

Victoria Park, Lethbridge, Alberta

Beautiful half duplex in South Lethbridge!

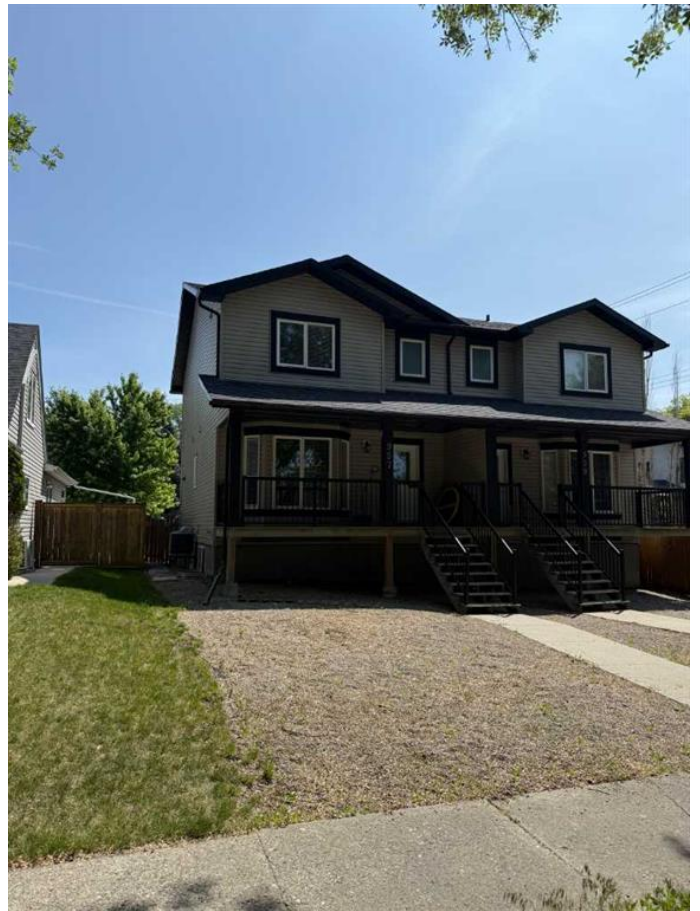
Central location right near the hospital gives you ease of access to the whole city!

\$1850/month plus utilities. \$1850 damage deposit due upon signing.

Available July 1!

If you're interested, please fill out this rental application:

<https://forms.gle/CL5ZATiRH6Rc4wZL7>



Essential Information

MLS® #	A2233157
Price	\$1,850
Bathrooms	0.00
Square Footage	1,295
Acres	0.00
Type	Rental
Status	Active

Community Information

Address	957 15 Street S
Subdivision	Victoria Park
City	Lethbridge
County	Lethbridge
Province	Alberta
Postal Code	T1J 3A6

Amenities

Parking Off Street

Interior

Appliances Dishwasher, Electric Oven, Microwave, Refrigerator, Washer/Dryer

Exterior

Roof Asphalt Shingle

Additional Information

Date Listed June 20th, 2025

Days on Market 1

Listing Details

Listing Office Lethbridge Real Estate.com

Data is supplied by Pillar 9â„¢ MLS® System. Pillar 9â„¢ is the owner of the copyright in its MLS® System. Data is deemed reliable but is not guaranteed accurate by Pillar 9â„¢. The trademarks MLS®, Multiple Listing Service® and the associated logos are owned by The Canadian Real Estate Association (CREA) and identify the quality of services provided by real estate professionals who are members of CREA. Used under license.