

\$179,999 - 407, 9229 Lakeland Drive, Grande Prairie

MLS® #A2232767

\$179,999

2 Bedroom, 2.00 Bathroom, 942 sqft

Residential on 0.00 Acres

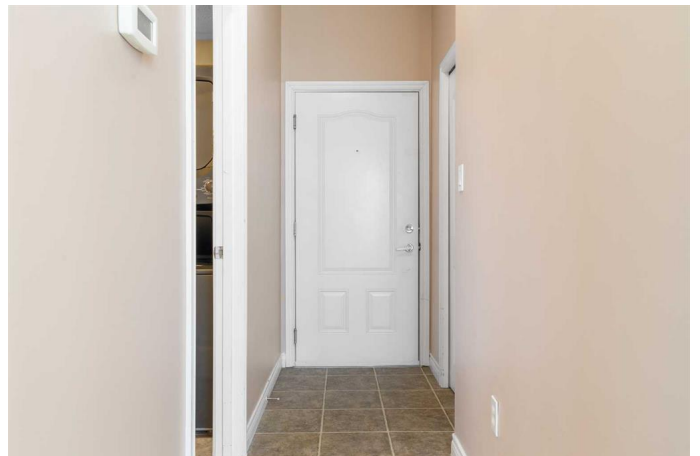
Lakeland., Grande Prairie, Alberta

TOP SOUTHEAST CORNER UNIT! THEY ONLY MAKE 1 OF THESE SUPER WELL CARED FOR OWNER occupied 2-bedroom, 2-bathroom condo. Watch the sun come up and the wildlife! The master bedroom offers a private ensuite, while the large second bedroom has its own well-appointed bathroom, ensuring privacy and convenience for family or guests. The condo's bright and spacious living space is enhanced by large windows that fill the rooms with natural light. Nestled in a quiet building, you'll enjoy peace and serenity while still being close to all essential amenities. Located across the road from a school and shopping plaza. Grab this one of a kind condo today!

Built in 2006

Essential Information

MLS® #	A2232767
Price	\$179,999
Bedrooms	2
Bathrooms	2.00
Full Baths	2
Square Footage	942
Acres	0.00
Year Built	2006
Type	Residential
Sub-Type	Apartment
Style	Penthouse



Status	Active
--------	--------

Community Information

Address	407, 9229 Lakeland Drive
Subdivision	Lakeland.
City	Grande Prairie
County	Grande Prairie
Province	Alberta
Postal Code	T8X0B8

Amenities

Amenities	Elevator(s)
Parking Spaces	1
Parking	Stall

Interior

Interior Features	See Remarks
Appliances	See Remarks
Heating	Boiler
Cooling	None
# of Stories	4

Exterior

Exterior Features	Balcony, BBQ gas line
Construction	See Remarks

Additional Information

Date Listed	June 19th, 2025
Days on Market	4
Zoning	RM
HOA Fees Freq.	MON

Listing Details

Listing Office	Sutton Group Grande Prairie Professionals
----------------	---

Data is supplied by Pillar 9â„¢ MLS® System. Pillar 9â„¢ is the owner of the copyright in its MLS® System. Data is deemed reliable but is not guaranteed accurate by Pillar 9â„¢. The trademarks MLS®, Multiple Listing Service® and the associated logos are owned by The Canadian Real Estate Association (CREA) and identify the quality of services provided by real estate professionals who are members of CREA. Used under license.