

# \$659,900 - 2 Eva Crescent, Lacombe

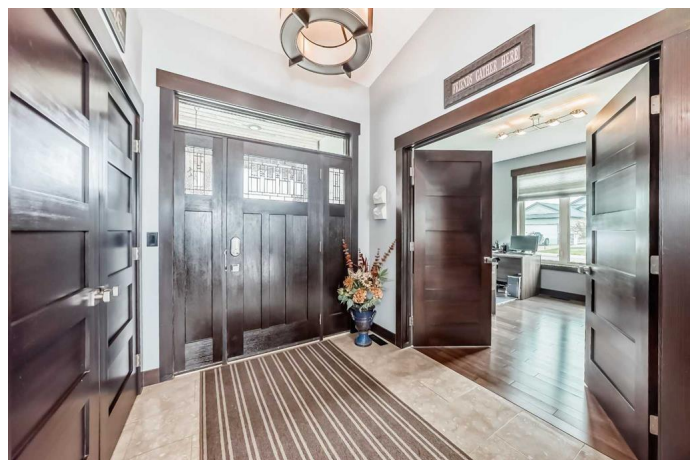
MLS® #A2229829

**\$659,900**

4 Bedroom, 3.00 Bathroom, 1,602 sqft  
Residential on 0.17 Acres

Elizabeth Park, Lacombe, Alberta

Discover exceptional living in this custom-built executive bungalow, ideally situated on a quiet crescent in the highly sought-after Elizabeth Park. With over 1,600 sq ft of refined living space, this home impresses from the moment you step inside. The spacious front entry welcomes you with elegant limestone tile and soaring vaulted ceilings that open into an expansive, light-filled living area. Rich hardwood flooring and large French doors introduce a versatile office or bedroom space, perfect for your lifestyle needs. The gourmet kitchen is a chef's dream, featuring dark maple cabinetry, quartz countertops, stainless steel appliances, and a generous center island with extended seating—ideal for entertaining. The open-concept layout flows seamlessly into the living room, where a striking modern gas fireplace is flanked by custom built-ins and a wall of windows offering views of the backyard. Step through the garden doors onto a beautiful cedar deck, complete with gas BBQ hookup—perfect for outdoor gatherings. Retreat to your private primary suite, a true oasis featuring a spa-inspired ensuite with dual vanities, a luxurious soaker tub, a tiled walk-in shower, and in-floor heating for ultimate comfort. The fully developed basement offers even more space with two additional bedrooms, a full bath, and an impressive media room complete with raised seating and a stylish bar area featuring custom concrete countertops, a sink, fridge, and dishwasher. Built-in speakers and in-floor heating run



throughout the homeâ€”including the garageâ€”adding both comfort and energy efficiency thanks to full spray foam insulation from basement to roof. Donâ€™t miss the opportunity to own this stunning, meticulously crafted home in one of the cityâ€™s most desirable neighborhoods.

Built in 2009

### **Essential Information**

|                |             |
|----------------|-------------|
| MLS® #         | A2229829    |
| Price          | \$659,900   |
| Bedrooms       | 4           |
| Bathrooms      | 3.00        |
| Full Baths     | 2           |
| Half Baths     | 1           |
| Square Footage | 1,602       |
| Acres          | 0.17        |
| Year Built     | 2009        |
| Type           | Residential |
| Sub-Type       | Detached    |
| Style          | Bungalow    |
| Status         | Active      |

### **Community Information**

|             |                |
|-------------|----------------|
| Address     | 2 Eva Crescent |
| Subdivision | Elizabeth Park |
| City        | Lacombe        |
| County      | Lacombe        |
| Province    | Alberta        |
| Postal Code | T4L 0C9        |

### **Amenities**

|                |                        |
|----------------|------------------------|
| Parking Spaces | 2                      |
| Parking        | Double Garage Attached |
| # of Garages   | 1                      |

### **Interior**

|                   |   |
|-------------------|---|
| Interior Features | Built-in Features, Ceiling Fan(s), Central Vacuum, Closet Organizers, Double Vanity, High Ceilings, Kitchen Island, No Animal Home, No Smoking Home, Open Floorplan, Pantry, Quartz Counters, Soaking Tub, Storage, Sump Pump(s), Vaulted Ceiling(s), Vinyl Windows, Walk-In Closet(s), Wet Bar, Natural Woodwork, Tray Ceiling(s), Wired for Sound |
| Appliances        | Central Air Conditioner, Microwave, Refrigerator, Stove(s), Washer/Dryer, Window Coverings, Garburator  |
| Heating           | In Floor, Forced Air  |
| Cooling           | Central Air   |
| Fireplace         | Yes   |
| # of Fireplaces   | 1   |
| Fireplaces        | Gas   |
| Has Basement      | Yes   |
| Basement          | Finished, Full  |

## Exterior

|                   |  |
|-------------------|--|
| Exterior Features | BBQ gas line, Fire Pit, Private Yard, Storage, Rain Barrel/Cistern(s)                |
| Lot Description   | Back Lane, Back Yard, Cul-De-Sac, Few Trees, Front Yard, Landscaped, Rectangular Lot |
| Roof              | Asphalt Shingle  |
| Construction      | Wood Frame, Cement Fiber Board   |
| Foundation        | Poured Concrete  |

## Additional Information

|                |                 |
|----------------|-----------------|
| Date Listed    | June 13th, 2025 |
| Days on Market | 5               |
| Zoning         | R1              |

## Listing Details

|                |                            |
|----------------|----------------------------|
| Listing Office | 2 Percent Realty Advantage |
|----------------|----------------------------|

Data is supplied by Pillar 9â„¢ MLSÂ® System. Pillar 9â„¢ is the owner of the copyright in its MLSÂ® System. Data is deemed reliable but is not guaranteed accurate by Pillar 9â„¢. The trademarks MLSÂ®, Multiple Listing ServiceÂ® and the associated logos are owned by The Canadian Real Estate Association (CREA) and identify the quality of services provided by real estate professionals who are members of CREA. Used under license.