

\$384,900 - 14 Ovington Close, Red Deer

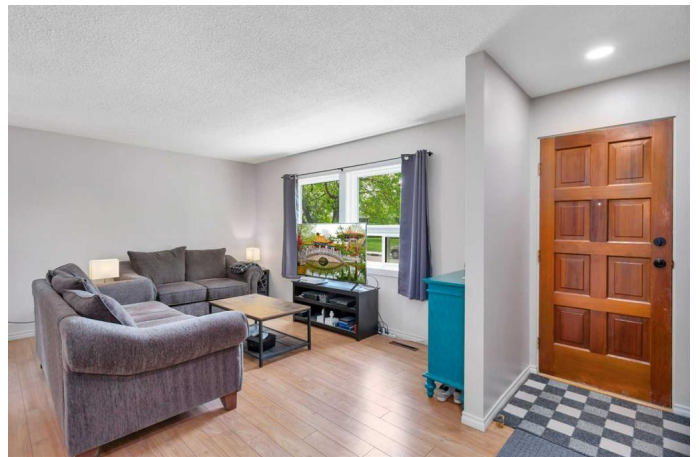
MLS® #A2228050

\$384,900

3 Bedroom, 2.00 Bathroom, 1,083 sqft
Residential on 0.15 Acres

Oriole Park, Red Deer, Alberta

Pretty updated bungalow with a BRAND NEW 22x24 Garage on quiet close in Oriole Park. Welcome to 14 Ovington Close! Located on a pretty close, this home has lovely curb appeal. Tucked back with some mature trees and plenty of sunlight, this home welcomes you! Stepping in, you are greeted with a spacious kitchen and dining room. With neutral flooring and light walls, this home is fresh and inviting. The dining room is well lit and opens to the NEW kitchen! With gorgeous white cabinetry, a dark butcher block top, stainless steel appliances, a handy pantry AND a large window facing your private landscaped yard! The adjacent hallway leads you to three good sized additional bedrooms, and a freshly updated 4 piece bath. The two front bedrooms have large south facing window, and the primary bedroom faces the yard. Access to the basement and backyard are off the kitchen. The basement is very spacious and cozy and is anchored by a whitewashed electric fireplace! There is an office (window does not meet egress as a bedroom), a renovated 3 piece bathroom, a laundry/ mechanical room and a HUGE storage room. With an established neighbourhood such as Oriole Park, you get the lovely mature yards with big trees & Shrubs. With a sweet ground level patio, a shrub & flower garden, plenty of lawn and a garden shed, there is so much room to enjoy the outdoors! The BRAND NEW fully finished (March 2025) garage offers plenty of work & storage space, an electric heater



AND 10' CEILINGS. There is also RV Parking. This home has BRAND NEW WINDOWS throughout and siding in 2025. The kitchen was completely redone in 2024 along with the downstairs bathroom. There is also plenty of fresh paint and small updates throughout. There is an Elementary school within walking distance as well as numerous parks and playgrounds. Highway 2 access is only 5 minutes away. With so many fresh updates, this home offers incredible value in a great location.

Built in 1972

Essential Information

MLS® #	A2228050
Price	\$384,900
Bedrooms	3
Bathrooms	2.00
Full Baths	2
Square Footage	1,083
Acres	0.15
Year Built	1972
Type	Residential
Sub-Type	Detached
Style	Bungalow
Status	Active

Community Information

Address	14 Ovington Close
Subdivision	Oriole Park
City	Red Deer
County	Red Deer
Province	Alberta
Postal Code	T4H5J3

Amenities

Parking Spaces	2
Parking	Double Garage Detached

of Garages 2

Interior

Interior Features Closet Organizers, Vinyl Windows
Appliances Dishwasher, Refrigerator, Stove(s), Washer/Dryer
Heating Forced Air
Cooling None
Fireplace Yes
of Fireplaces 1
Fireplaces Basement, Electric
Has Basement Yes
Basement Finished, Full

Exterior

Exterior Features Garden
Lot Description Back Lane, Back Yard, Front Yard, Lawn, Many Trees
Roof Asphalt Shingle
Construction Wood Frame
Foundation Poured Concrete

Additional Information

Date Listed June 5th, 2025
Days on Market 15
Zoning R1

Listing Details

Listing Office Royal LePage Network Realty Corp.

Data is supplied by Pillar 9â„¢ MLSÂ® System. Pillar 9â„¢ is the owner of the copyright in its MLSÂ® System. Data is deemed reliable but is not guaranteed accurate by Pillar 9â„¢. The trademarks MLSÂ®, Multiple Listing ServiceÂ® and the associated logos are owned by The Canadian Real Estate Association (CREA) and identify the quality of services provided by real estate professionals who are members of CREA. Used under license.