

# \$614,900 - 218 Edith Road Nw, Calgary

MLS® #A2226743

**\$614,900**

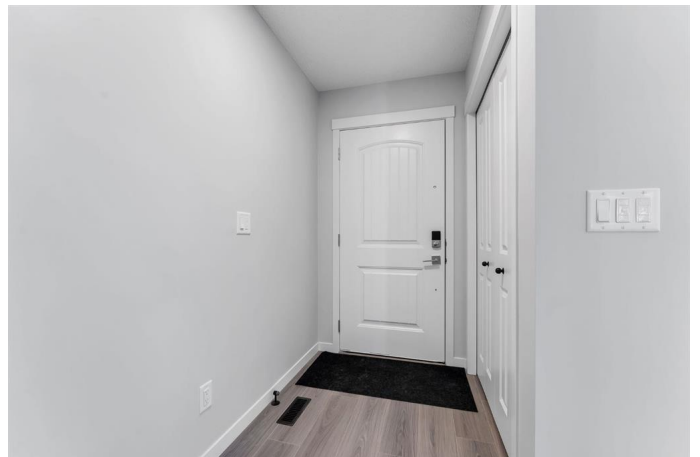
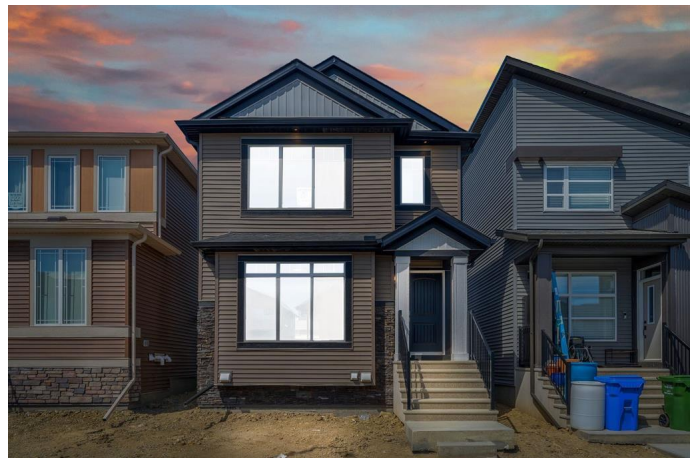
3 Bedroom, 3.00 Bathroom, 1,427 sqft

Residential on 0.06 Acres

Glacier Ridge, Calgary, Alberta

Welcome to this exceptional 2024-built home in NW Calgary, a perfect blend of modern elegance and functional design. This 3-bedroom, 2.5-bathroom home is packed with high-end upgrades and thoughtful details, making it one of the finest and most functional homes you'll come across. From the moment you arrive, the striking front elevation sets the stage for what's inside. Step into a huge and wide living area, a rare find in today's homes, offering ample space for relaxation and entertainment. The designated dining area adds to the home's practicality, providing the perfect setting for family meals and cherished moments. The heart of the home—the Gourmet kitchen—has been meticulously designed with upgraded Glossy cabinetry featuring gold handles, sleek quartz countertops throughout, and a stylish backsplash that enhances the modern aesthetic. Every element has been carefully chosen, from the chimney range hood fan that elevates the space to the built-in microwave and double-door refrigerator, ensuring both luxury and convenience. The kitchen peninsula offers additional workspace and seating, while the soap dispenser adds a touch of thoughtful functionality.

The master suite is a true retreat, featuring a standing shower ensuite with premium finishes, while the additional bathrooms continue the theme of contemporary luxury. The laundry area has been upgraded with designer tiles and additional storage, providing



both style and efficiency. Built with comfort in mind, the home features double-pane windows, ensuring energy efficiency and year-round coziness.

Adding to its future potential, the home comes with an unfinished basement, complete with a side entrance, Great ceiling height and rough-in plumbing, offering endless possibilities for customization. The house comes with a gravel parking pad at the back. This home is truly a rare gem, offering a perfect balance of modern luxury, thoughtful upgrades, and long-term potential. Donâ€™t miss outâ€”contact us today to learn more and schedule your private viewing!

Built in 2024

**Essential Information**

MLS® #	A2226743
Price	\$614,900
Bedrooms	3
Bathrooms	3.00
Full Baths	2
Half Baths	1
Square Footage	1,427
Acres	0.06
Year Built	2024
Type	Residential
Sub-Type	Detached
Style	2 Storey
Status	Active

**Community Information**

Address	218 Edith Road Nw
Subdivision	Glacier Ridge
City	Calgary
County	Calgary
Province	Alberta
Postal Code	T3R2C7

## Amenities

Amenities	None
Parking Spaces	2
Parking	Alley Access, Off Street, On Street, Parking Pad

## Interior

Interior Features	Double Vanity, High Ceilings, No Animal Home, No Smoking Home, Open Floorplan, Pantry, Quartz Counters, Vinyl Windows, Walk-In Closet(s)
Appliances	Dishwasher, Electric Stove, Microwave, Refrigerator, Washer/Dryer
Heating	Forced Air
Cooling	None
Has Basement	Yes
Basement	Exterior Entry, Full, Unfinished

## Exterior

Exterior Features	None
Lot Description	Back Lane
Roof	Asphalt Shingle
Construction	Vinyl Siding
Foundation	Poured Concrete

## Additional Information

Date Listed	June 2nd, 2025
Days on Market	9
Zoning	R-G
HOA Fees	420
HOA Fees Freq.	ANN

## Listing Details

Listing Office	RE/MAX First
----------------	--------------

Data is supplied by Pillar 9â„¢ MLS® System. Pillar 9â„¢ is the owner of the copyright in its MLS® System. Data is deemed reliable but is not guaranteed accurate by Pillar 9â„¢. The trademarks MLS®, Multiple Listing Service® and the associated logos are owned by The Canadian Real Estate Association (CREA) and identify the quality of services provided by real estate professionals who are members of CREA. Used under license.