

# \$499,000 - 842070 Range Road 30, Rural Clear Hills County

MLS® #A2226612

**\$499,000**

3 Bedroom, 2.00 Bathroom, 1,152 sqft  
Agri-Business on 123.23 Acres

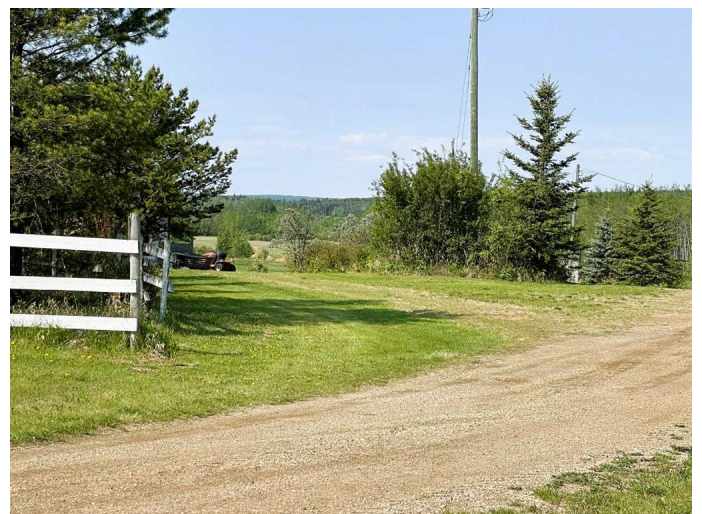
NONE, Rural Clear Hills County, Alberta

Looking for a Slice of Country Life with room to Roam? This 123.23 acre property offers an Inviting Escape with ample space both inside and out. The 1,152-square-foot Bungalow home offers open concept living /dining and boasts recent updated flooring and fresh paint - creating a clean, comfortable interior perfect for relaxing or entertaining.

The main floor bedrooms are spacious offering privacy and comfort, while there is an additional bedroom in the basement, ensuring there's room for guests or a growing family.

The partly finished basement hosts one bedroom, bathroom, storage and invites your creative vision's recreational space, or a hobby area, the choice is yours..

Step outside to a deck that wraps around two sides of the home, ideal for morning coffee, evening barbecues, or simply soaking up the expansive views. The walk-out basement adds practical access to your outdoor surroundings, which include a smaller dugout for water access, a cozy chicken coop, a pig pen (yes, really's it's perfect for small-scale farming), and a heated Metal Clad 40 ft. x 64 ft. (dirt floor) workshop for year-round projects additionally there is a Grade 2 gravel pit on the property.



Tucked in a quiet rural setting, this property welcomes nature lovers, hobby farmers, hunting, recreation, and anyone seeking a peaceful environment to call home. Whether you're looking to cultivate a few small crops, raise animals, or simply enjoy the great outdoors, this place delivers room to breathe and endless possibilities.

If you're ready to make a move to the countryside, this could be the peaceful, practical paradise you've been searching for. Bring your ideasâ€”Add your Personal Touch to the Home and Propertyâ€”Book a Viewing with your Favorite Realtor to explore all this property has to offer. (Gravel Pit Equipment and Cabin are not included in the sale of the property).

Built in 1986

### **Essential Information**

MLS® #	A2226612
Price	\$499,000
Bedrooms	3
Bathrooms	2.00
Full Baths	2
Square Footage	1,152
Acres	123.23
Year Built	1986
Type	Agri-Business
Sub-Type	Agriculture
Style	Bungalow
Status	Active

### **Community Information**

Address	842070 Range Road 30
Subdivision	NONE
City	Rural Clear Hills County
County	Clear Hills County

Province Alberta  
Postal Code T0H 1L0

### Amenities

Utilities Electricity Available, Natural Gas Available  
Parking Off Street

### Interior

Interior Features See Remarks, Storage  
Appliances Dryer, Gas Stove, Refrigerator, Washer  
Heating Forced Air, Natural Gas, Wood  
Cooling None  
Has Basement Yes  
Basement Full, Partially Finished, Walk-Up To Grade

### Exterior

Exterior Features Other  
Lot Description Back Yard, Backs on to Park/Green Space, Creek/River/Stream/Pond, Farm, Front Yard, Fruit Trees/Shrub(s), Gentle Sloping, Landscaped, Lawn, Low Maintenance Landscape, Many Trees, Meadow, Native Plants, Other, Pasture, Private, See Remarks  
Roof Asphalt  
Construction Mixed  
Foundation Wood

### Additional Information

Date Listed May 30th, 2025  
Days on Market 15  
Zoning AG

### Listing Details

Listing Office Grassroots Realty Group Ltd.

Data is supplied by Pillar 9â„¢ MLSÂ® System. Pillar 9â„¢ is the owner of the copyright in its MLSÂ® System. Data is deemed reliable but is not guaranteed accurate by Pillar 9â„¢. The trademarks MLSÂ®, Multiple Listing ServiceÂ® and the associated logos are owned by The Canadian Real Estate Association (CREA) and identify the quality of services provided by real estate professionals who are members of CREA. Used under license.