

# \$137,900 - 203, 200 4 Avenue Sw, Sundre

MLS® #A2225931

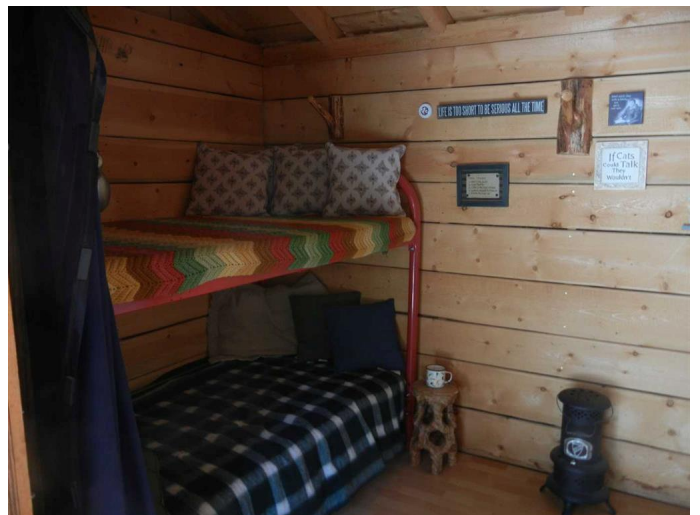
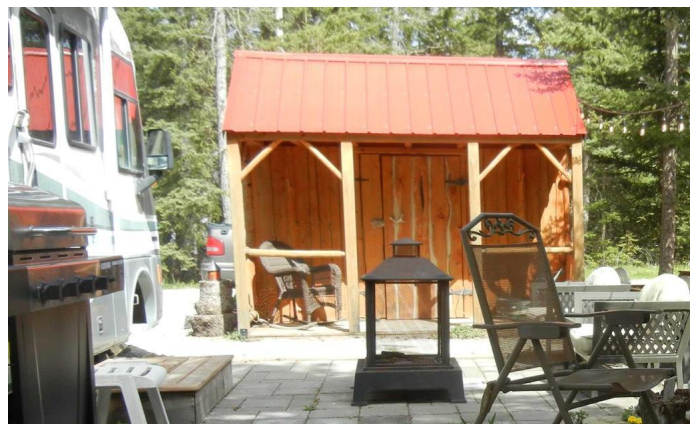
**\$137,900**

1 Bedroom, 0.00 Bathroom, 270 sqft

Residential on 0.10 Acres

NONE, Sundre, Alberta

Really enjoy your summer in the great outdoors. This Riverside RV site is large and well treed backing on a lazy little year round stream as well as fronting on a wooded area. There are 2 decks on the side of the motor home as well as a graveled fire pit at the back and still plenty of space left over for the kids (or grandkids) The bunkie with it's charming little veranda has a bunk bed and small fridge and a really cool hidie hole with ladder over the veranda for games or sleeping. The motor home is a 1997 35 foot Pace Arrow Vision with 2 slides and 2 furnaces/air conditioners with a great sized living area as well as a separate bedroom with a double closet and lots of built in drawers. The bath features a sink in the passage way as well as a room with a commode and shower. (We've never used the shower as Riverside has showers that are large and clean) As well as a room for parties and get togethers Riverside features an outdoor playground, clean spacious bathrooms and a coin operated washer and dryer This is a great 3 season property and possession can be very quick. It will come with everything you see in it that is not personal in nature. So bring your food and prepare to start enjoying your summer.



## Essential Information

MLS® # A2225931

Price \$137,900

Bedrooms	1
Bathrooms	0.00
Square Footage	270
Acres	0.10
Type	Residential
Sub-Type	Recreational
Style	Cottage/Cabin
Status	Active

### Community Information

Address	203, 200 4 Avenue Sw
Subdivision	NONE
City	Sundre
County	Mountain View County
Province	Alberta
Postal Code	T0M 1X0

### Amenities

Amenities	Other, Clubhouse, Coin Laundry, Picnic Area
Parking Spaces	2
Parking	Off Street

### Interior

Interior Features	See Remarks
Appliances	Other
Heating	Ceiling, Propane
Cooling	Rooftop

### Exterior

Exterior Features	Other
Lot Description	Environmental Reserve, Many Trees, Close to Clubhouse, Creek/River/Stream/Pond, Reverse Pie Shaped Lot
Roof	Other
Construction	Other

### Additional Information

Date Listed	May 31st, 2025
Days on Market	73
Zoning	SR

**Listing Details**

Listing Office                      MaxWell Capital Realty

Data is supplied by Pillar 9â„¢ MLS® System. Pillar 9â„¢ is the owner of the copyright in its MLS® System. Data is deemed reliable but is not guaranteed accurate by Pillar 9â„¢. The trademarks MLS®, Multiple Listing Service® and the associated logos are owned by The Canadian Real Estate Association (CREA) and identify the quality of services provided by real estate professionals who are members of CREA. Used under license.