

\$1,200,000 - Rr292 Symon's Valley Road, Rural Rocky View County

MLS® #A2224312

\$1,200,000

0 Bedroom, 0.00 Bathroom,
Land on 33.01 Acres

NONE, Rural Rocky View County, Alberta

33 Acres suitable for building your dream home. Mountain View from the property. Electricity located at approach to property. Land is presently leased out. Listing includes sale of the Corporation, land is in Corporation Name, just need to change directors.

Essential Information

| | |
|-----------|------------------|
| MLS® # | A2224312 |
| Price | \$1,200,000 |
| Bathrooms | 0.00 |
| Acres | 33.01 |
| Type | Land |
| Sub-Type | Residential Land |
| Status | Active |

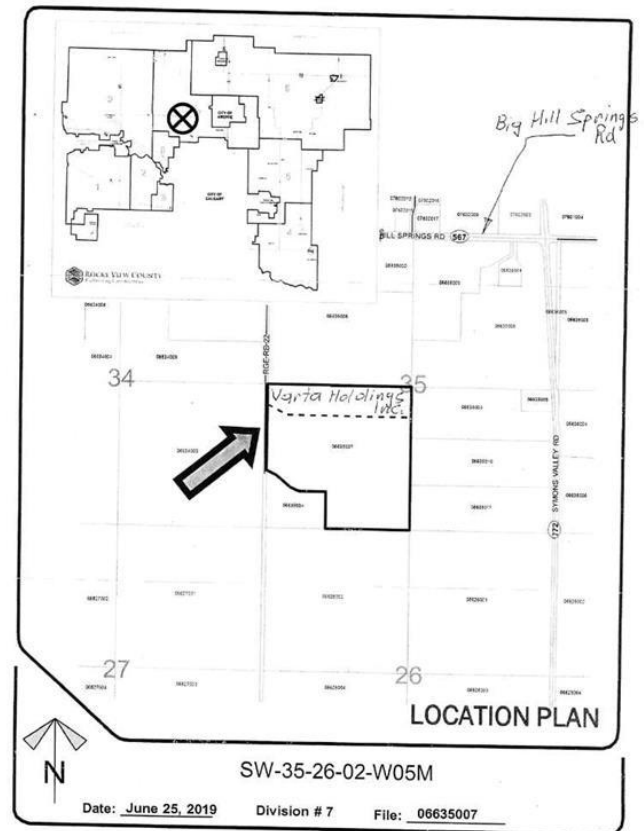
Community Information

| | |
|-------------|---------------------------|
| Address | Rr292 Symon's Valley Road |
| Subdivision | NONE |
| City | Rural Rocky View County |
| County | Rocky View County |
| Province | Alberta |
| Postal Code | T0M 0S0 |

Amenities

| | |
|-----------|--|
| Utilities | Electricity at Lot Line, Natural Gas at Lot Line |
|-----------|--|

Additional Information



| | |
|----------------|----------------|
| Date Listed | May 23rd, 2025 |
| Days on Market | 80 |
| Zoning | R-Rur/A-SmL |

Listing Details

| | |
|----------------|-------------|
| Listing Office | Real Broker |
|----------------|-------------|

Data is supplied by Pillar 9â„¢ MLS® System. Pillar 9â„¢ is the owner of the copyright in its MLS® System. Data is deemed reliable but is not guaranteed accurate by Pillar 9â„¢. The trademarks MLS®, Multiple Listing Service® and the associated logos are owned by The Canadian Real Estate Association (CREA) and identify the quality of services provided by real estate professionals who are members of CREA. Used under license.