

# \$630,000 - 9 Highway Ne, Rural Rocky View County

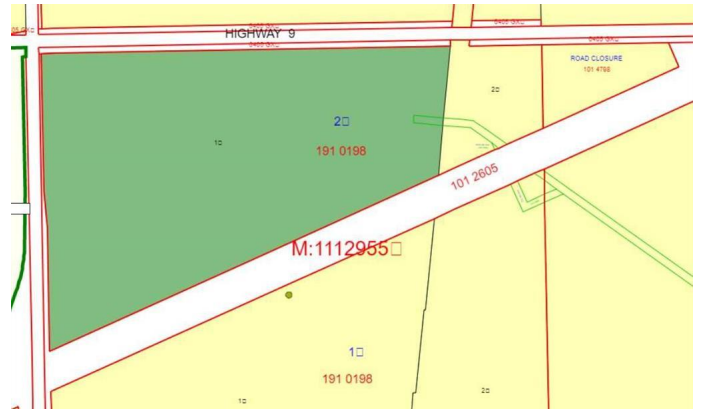
MLS® #A2221345

**\$630,000**

0 Bedroom, 0.00 Bathroom,  
Land on 53.59 Acres

NONE, Rural Rocky View County, Alberta

Excellent potential for this 53.59 Acres. Located 16 miles east of Balzac. The lot faces onto Highway 9. An irrigation fed creek crosses the eastern end of the land. The property has resource income from a gas well lease and the land is leased each growing season to a regional farming operation. Will make a great location for a country home. Kathryn K9 school is located nearby. Easy access, with dust free paved roads on three sides.



## Essential Information

MLS® #	A2221345
Price	\$630,000
Bathrooms	0.00
Acres	53.59
Type	Land
Sub-Type	Commercial Land
Status	Active

## Community Information

Address	9 Highway Ne
Subdivision	NONE
City	Rural Rocky View County
County	Rocky View County
Province	Alberta
Postal Code	T4A 1J4

## School Information

District Rocky View School Division No. 41

### **Additional Information**

Date Listed May 14th, 2025

Days on Market 87

Zoning AG-General

### **Listing Details**

Listing Office RE/MAX Real Estate (Mountain View)

Data is supplied by Pillar 9â„¸ MLSÂ® System. Pillar 9â„¸ is the owner of the copyright in its MLSÂ® System. Data is deemed reliable but is not guaranteed accurate by Pillar 9â„¸. The trademarks MLSÂ®, Multiple Listing ServiceÂ® and the associated logos are owned by The Canadian Real Estate Association (CREA) and identify the quality of services provided by real estate professionals who are members of CREA. Used under license.