

\$399,900 - 1206 5a Avenue, Lethbridge

MLS® #A2220618

\$399,900

3 Bedroom, 2.00 Bathroom, 1,195 sqft

Residential on 0.09 Acres

London Road, Lethbridge, Alberta

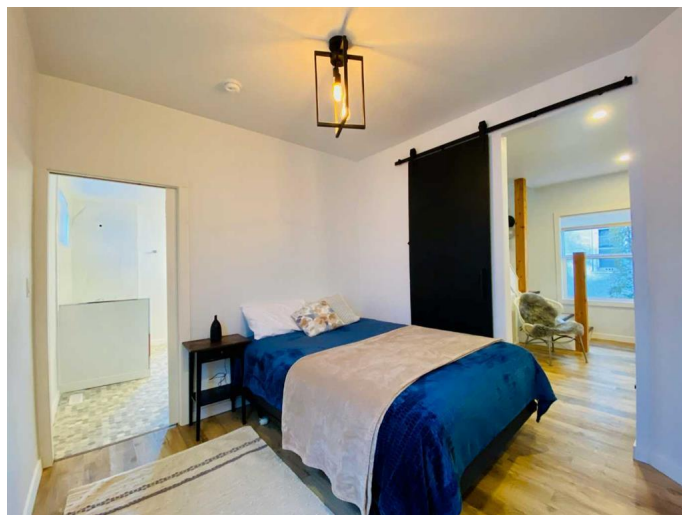
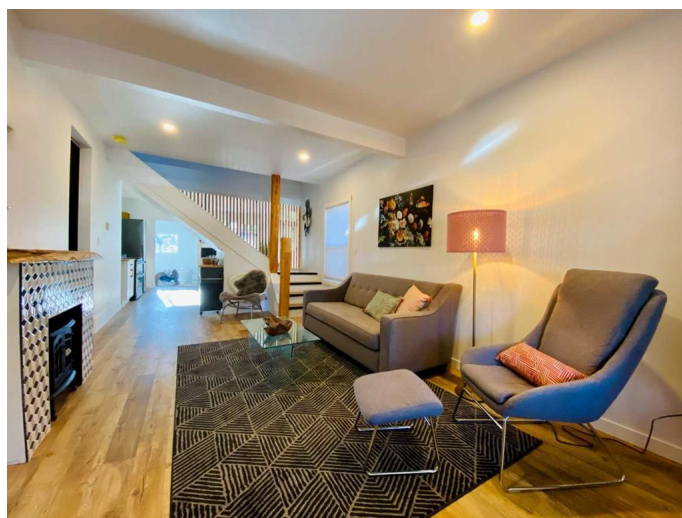
Visit REALTOR® website for additional information.

Charming and fully renovated, this 1½ Storey home at 1206 5A Ave S blends vintage character with modern upgrades. Located in the desirable London Road area, it offers 3 bedrooms, 1.5 baths, a custom kitchen, and a spacious living room with electric fireplace. Enjoy a heated sunporch, rear deck, landscaped yard, and parking for 3-4. Renovated in 2021, with a fenced yard and large shed—just steps from downtown, schools, shopping, and the senior center. A true gem!

Built in 1908

Essential Information

MLS® #	A2220618
Price	\$399,900
Bedrooms	3
Bathrooms	2.00
Full Baths	1
Half Baths	1
Square Footage	1,195
Acres	0.09
Year Built	1908
Type	Residential
Sub-Type	Detached
Style	1 and Half Storey
Status	Active



Community Information

Address	1206 5a Avenue
Subdivision	London Road
City	Lethbridge
County	Lethbridge
Province	Alberta
Postal Code	T1J 0Y2

Amenities

Parking Spaces	3
Parking	Off Street, RV Access/Parking

Interior

Interior Features	Recessed Lighting, Wood Counters
Appliances	Dishwasher, Double Oven, Dryer, Electric Range, Gas Water Heater
Heating	Forced Air
Cooling	None
Fireplace	Yes
# of Fireplaces	1
Fireplaces	Electric
Has Basement	Yes
Basement	Crawl Space, Partial

Exterior

Exterior Features	Private Yard
Lot Description	Back Lane, Back Yard, Front Yard, Landscaped, Private
Roof	Asphalt Shingle
Construction	Vinyl Siding, Wood Frame
Foundation	Poured Concrete

Additional Information

Date Listed	May 13th, 2025
Days on Market	9
Zoning	R-L(L)

Listing Details

Listing Office	PG Direct Realty Ltd.
----------------	-----------------------

Data is supplied by Pillar 9â„¢ MLSÂ® System. Pillar 9â„¢ is the owner of the copyright in its MLSÂ® System. Data is deemed reliable but is not guaranteed accurate by Pillar 9â„¢. The trademarks MLSÂ®, Multiple Listing ServiceÂ® and the associated logos are owned by The Canadian Real Estate Association (CREA) and identify the quality of services

provided by real estate professionals who are members of CREA. Used under license.