

# \$379,900 - 196 Stone Crescent Se, Medicine Hat

MLS® #A2218690

## \$379,900

4 Bedroom, 2.00 Bathroom, 955 sqft

Residential on 0.12 Acres

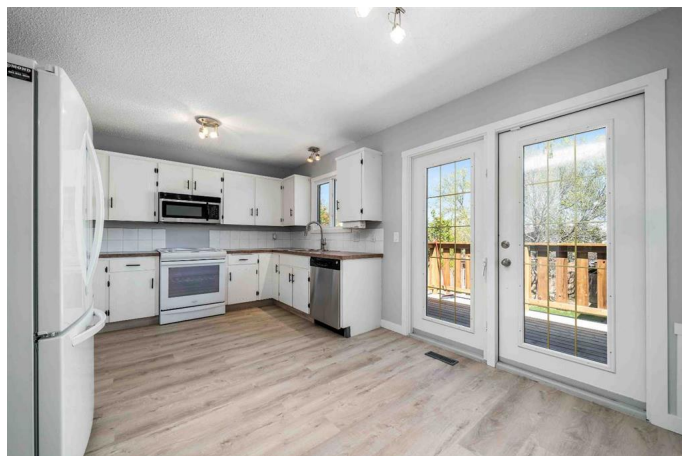
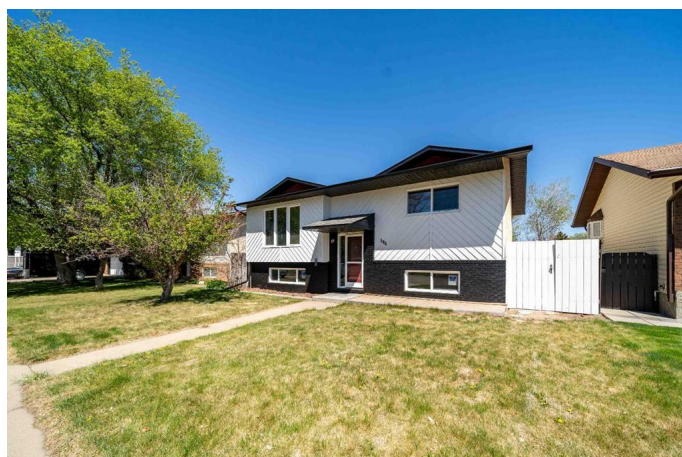
SE Southridge, Medicine Hat, Alberta

This recently updated Southridge bi-level has great street appeal and sits in a quiet cul-de-sac with a green space out front. Entering the home, you are met with a open layout between the living area and dining room upstairs. The kitchen is a good size, with a new fridge and range. On the main floor we have two bedrooms and two downstairs. Both floors have been recently painted, new windows and flooring installed as well. The basement boasts laminate flooring, tile and carpet for the two bedrooms. The very attractive gas fireplace has river rock facing and this makes a very cozy living area for those cold winter days. The large double garage is a fully finished, heated and with dual doors. The deck railing was recently replaced, and the singles are newer for both the house and garage as well. Come check out this great family home!

Built in 1981

## Essential Information

MLS® #	A2218690
Price	\$379,900
Bedrooms	4
Bathrooms	2.00
Full Baths	2
Square Footage	955
Acres	0.12
Year Built	1981



Type	Residential
Sub-Type	Detached
Style	Bi-Level
Status	Active

### Community Information

Address	196 Stone Crescent Se
Subdivision	SE Southridge
City	Medicine Hat
County	Medicine Hat
Province	Alberta
Postal Code	T1B 3E7

### Amenities

Parking Spaces	2
Parking	Alley Access, Double Garage Detached, Garage Door Opener, Heated Garage, Insulated, Off Street
# of Garages	2

### Interior

Interior Features	Sump Pump(s)
Appliances	Central Air Conditioner, Dishwasher, Garage Control(s), Microwave, Range, Refrigerator
Heating	Forced Air, Natural Gas
Cooling	Central Air
Fireplace	Yes
# of Fireplaces	1
Fireplaces	Basement, Gas, Stone
Has Basement	Yes
Basement	Finished, Full

### Exterior

Exterior Features	Private Yard
Lot Description	Back Lane, Back Yard, Cul-De-Sac, Front Yard, Rectangular Lot
Roof	Asphalt Shingle
Construction	Mixed, Stucco, Wood Siding
Foundation	Poured Concrete

### Additional Information

Date Listed	May 8th, 2025
Days on Market	1
Zoning	R-LD

### **Listing Details**

Listing Office	ROYAL LEPAGE COMMUNITY REALTY
----------------	-------------------------------

Data is supplied by Pillar 9â„¢ MLS® System. Pillar 9â„¢ is the owner of the copyright in its MLS® System. Data is deemed reliable but is not guaranteed accurate by Pillar 9â„¢. The trademarks MLS®, Multiple Listing Service® and the associated logos are owned by The Canadian Real Estate Association (CREA) and identify the quality of services provided by real estate professionals who are members of CREA. Used under license.