

# \$549,900 - 17 Craig Road, Sylvan Lake

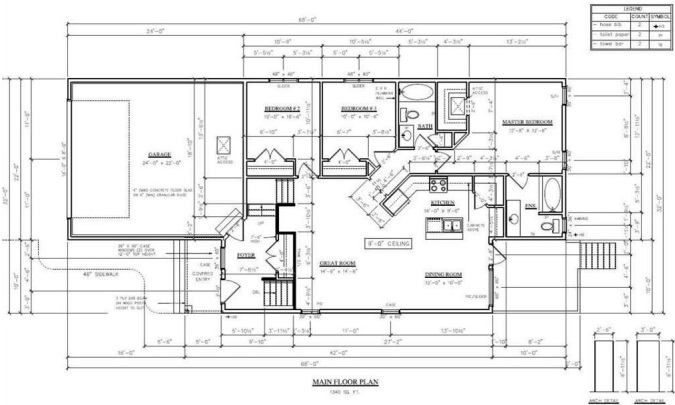
MLS® #A2217885

**\$549,900**

3 Bedroom, 2.00 Bathroom, 1,340 sqft  
Residential on 0.13 Acres

Crestview, Sylvan Lake, Alberta

Welcome to 17 Craig Road, another masterpiece from renowned Abbey Platinum Master Builder. This brand new 1340 Square foot 3 bed 2 bath Bi Level will be ready for it's new owner soon. From the moment you walk in you will appreciate the soaring ceilings in the entry way leading to the extremely family friendly open floorplan. You will love the bright, open, airy feel of the kitchen, dining, and great room with stainless steel appliances and luxury vinyl plank throughout. 3 bedrooms up including a beautiful primary suite with a full 4 piece ensuite and walk in closet. The double attached garage will keep your vehicles protected and offer plenty of storage. The basement is unfinished and waiting for your ideas. Feel at ease with the New Home Warranty to protect your investment. This could be the one you have been waiting for.



DESIGNED BY 2014 NEW



Built in 2025

## Essential Information

MLS® #	A2217885
Price	\$549,900
Bedrooms	3
Bathrooms	2.00
Full Baths	2
Square Footage	1,340
Acres	0.13
Year Built	2025

Type	Residential
Sub-Type	Detached
Style	Bi-Level
Status	Active

### Community Information

Address	17 Craig Road
Subdivision	Crestview
City	Sylvan Lake
County	Red Deer County
Province	Alberta
Postal Code	T4S 0L5

### Amenities

Parking Spaces	4
Parking	Double Garage Attached
# of Garages	2

### Interior

Interior Features	Built-in Features, See Remarks
Appliances	Dishwasher, Refrigerator, Stove(s)
Heating	Forced Air, Natural Gas
Cooling	None
Has Basement	Yes
Basement	Full, Unfinished

### Exterior

Exterior Features	None
Lot Description	Back Lane, Back Yard, City Lot, Front Yard, Level, Rectangular Lot, Street Lighting
Roof	Asphalt Shingle
Construction	Mixed
Foundation	Poured Concrete

### Additional Information

Date Listed	May 6th, 2025
Days on Market	49
Zoning	R1A

### Listing Details

Listing Office

RE/MAX real estate central alberta

Data is supplied by Pillar 9â„¢ MLSÂ® System. Pillar 9â„¢ is the owner of the copyright in its MLSÂ® System. Data is deemed reliable but is not guaranteed accurate by Pillar 9â„¢. The trademarks MLSÂ®, Multiple Listing ServiceÂ® and the associated logos are owned by The Canadian Real Estate Association (CREA) and identify the quality of services provided by real estate professionals who are members of CREA. Used under license.