

# \$437,500 - 20 Parkland Drive, Parkland Beach

MLS® #A2217607

**\$437,500**

4 Bedroom, 1.00 Bathroom, 1,410 sqft

Residential on 0.53 Acres

NONE, Parkland Beach, Alberta

**REAL AUTHENTIC CABIN AT THE LAKE!!!**

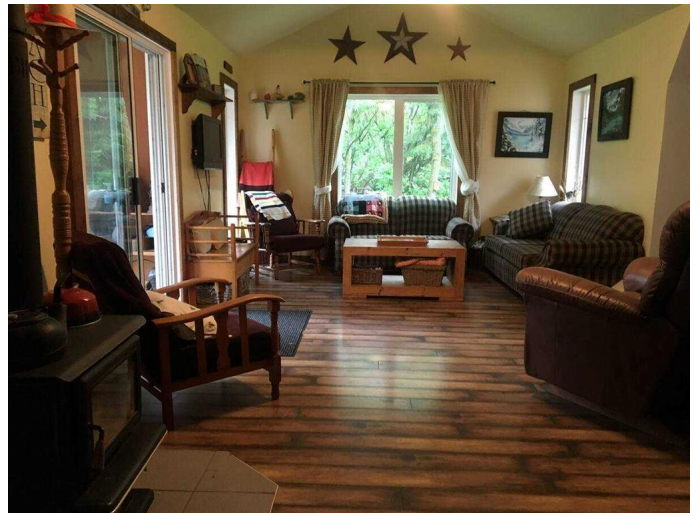
**Awesome Cedar A-FRAME hideaway!!**

Located right across from the beach at The Summer Village of Parkland Beach on Gull Lake just minutes out of Lacombe. This property offers 1/2 acre lots of mature trees (very private), play center, shed, fire pit, picnic table. The A-Frame chalet boasts over 1400 sq ft, on both floors. It has 4 bedrooms, appliances, wood stove and comes with Beds Couches and Window coverings. This cottage is used year around for all summer and winter activities. Parkland Beach offers a first class beach, state of the art inland marina system, community center, ball diamond, beach volleyball, Disc Golf Great Neighbourhood store and walking trails.

Built in 1995

## Essential Information

MLS® #	A2217607
Price	\$437,500
Bedrooms	4
Bathrooms	1.00
Full Baths	1
Square Footage	1,410
Acres	0.53
Year Built	1995
Type	Residential
Sub-Type	Recreational



Style	Acreage with Residence, A-Frame
Status	Active

### Community Information

Address	20 Parkland Drive
Subdivision	NONE
City	Parkland Beach
County	Ponoka County
Province	Alberta
Postal Code	T0C 2J0

### Amenities

Parking	Additional Parking, Driveway, Off Street, Parking Pad, RV Access/Parking, Front Drive, Gravel Driveway
Waterfront	Beach Access, Lake, Lake Privileges, See Remarks

### Interior

Interior Features	Breakfast Bar, Ceiling Fan(s)
Appliances	Electric Range, Refrigerator
Heating	Forced Air, Natural Gas, Wood Stove, Wood
Cooling	None
Fireplace	Yes
# of Fireplaces	1
Fireplaces	Living Room, Wood Burning, Free Standing
Basement	None

### Exterior

Exterior Features	Balcony, Fire Pit, Storage, RV Hookup
Lot Description	Few Trees, Front Yard, Interior Lot, Lake, Lawn, Level, Many Trees, Private, Rectangular Lot, See Remarks, Gentle Sloping, Native Plants
Roof	Asphalt Shingle
Construction	Mixed
Foundation	Poured Concrete, Combination

### Additional Information

Date Listed	May 3rd, 2025
Zoning	LR

### Listing Details

Listing Office	2 Percent Realty Advantage
----------------	----------------------------

Data is supplied by Pillar 9â„¢ MLS® System. Pillar 9â„¢ is the owner of the copyright in its MLS® System. Data is deemed reliable but is not guaranteed accurate by Pillar 9â„¢. The trademarks MLS®, Multiple Listing Service® and the associated logos are owned by The Canadian Real Estate Association (CREA) and identify the quality of services provided by real estate professionals who are members of CREA. Used under license.