

# \$235,000 - F8, 5300 Vista Trail, Blackfalds

MLS® #A2216169

## \$235,000

2 Bedroom, 2.00 Bathroom, 1,021 sqft

Residential on 0.00 Acres

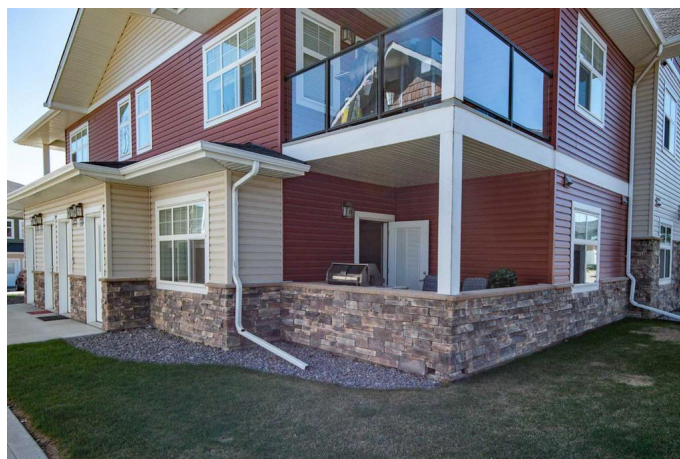
Valley Ridge, Blackfalds, Alberta

LOWER LEVEL CONDO AT VALLEY CROSSING - Easily accessibility and offers affordability. The location of this unit is tucked away and offers a private retreat. The main floor unit has is easily accessed from the parking lot and features an OPEN CONCEPT with 9 foot ceilings. This development borders the popular Abbey Center, a park, walking trails and has convenient entry to Highway 2 and Highway 2A. Inside you'll find 2 BEDROOMS & 2 BATHROOMS. There is also a large storage area, IN-SUITE LAUNDRY, LARGE COVERED "Private" DECK and 2 assigned parking stalls plus lots of visitor stalls. The kitchen has ample counter space and cabinets that have been upgraded to soft-closures hinges, all kitchen appliances are less then 1 year old (Fridge, Stove and Built in Microwave). This condo is very well ran and CONDO FEES are LOW.

Built in 2015

## Essential Information

MLS® #	A2216169
Price	\$235,000
Bedrooms	2
Bathrooms	2.00
Full Baths	2
Square Footage	1,021
Acres	0.00
Year Built	2015



Type	Residential
Sub-Type	Apartment
Style	Single Level Unit, Back Split
Status	Active

### Community Information

Address	F8, 5300 Vista Trail
Subdivision	Valley Ridge
City	Blackfalds
County	Lacombe County
Province	Alberta
Postal Code	T4M 0L8

### Amenities

Amenities	Parking, Trash
Parking Spaces	2
Parking	Assigned, Off Street

### Interior

Interior Features	Closet Organizers, High Ceilings, Kitchen Island, No Animal Home, No Smoking Home, Storage, Vinyl Windows, Walk-In Closet(s)
Appliances	Electric Range, Microwave Hood Fan, Refrigerator, Washer/Dryer
Heating	Forced Air, Natural Gas
Cooling	None
# of Stories	2

### Exterior

Exterior Features	Balcony, Private Entrance
Roof	Asphalt
Construction	Vinyl Siding, Wood Frame
Foundation	Poured Concrete

### Additional Information

Date Listed	May 6th, 2025
Days on Market	5
Zoning	R3

### Listing Details

Listing Office	RE/MAX real estate central alberta
----------------	------------------------------------

Data is supplied by Pillar 9â„¢ MLS® System. Pillar 9â„¢ is the owner of the copyright in its MLS® System. Data is deemed reliable but is not guaranteed accurate by Pillar 9â„¢. The trademarks MLS®, Multiple Listing Service® and the associated logos are owned by The Canadian Real Estate Association (CREA) and identify the quality of services provided by real estate professionals who are members of CREA. Used under license.