

# **\$385,000 - 283 Seven Persons Drive Sw, Medicine Hat**

MLS® #A2214896

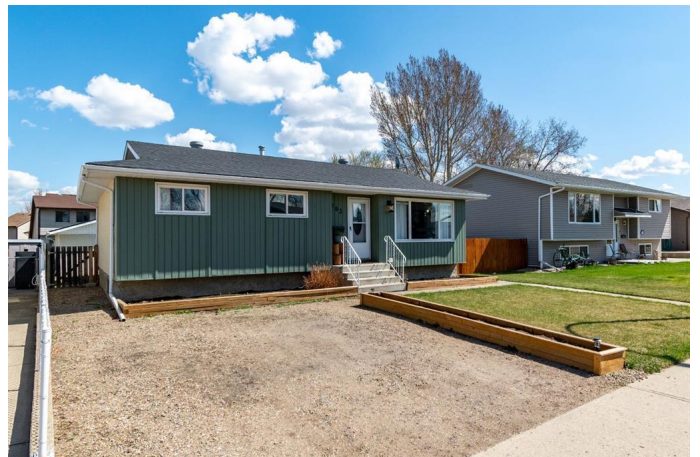
## **\$385,000**

4 Bedroom, 2.00 Bathroom, 989 sqft

Residential on 0.16 Acres

SW Southridge, Medicine Hat, Alberta

Welcome to 283 Seven Persons Drive SW, a beautifully maintained and fully developed 988 sqft bungalow located in the SW Southridge neighbourhood just steps away from the picturesque coulee walking paths! This home offers an inviting open concept design, with a bright main level featuring three bedrooms, a 4 pc bathroom, stylish vinyl plank flooring, and an abundance of natural light. The heart of the home is the kitchen, featuring a large island with a raised eating bar and timeless cabinetry. The living room is both comfortable and functional, featuring wall to wall built-in shelving that surrounds a central fireplace with a wall-mounted TV, perfect for relaxing or entertaining. Downstairs, the fully developed lower level offers an incredible amount of space with a wet bar (a rare bonus!), a warm and welcoming family room with a second fireplace, and a generous primary bedroom complete with a 3 pc ensuite, and an attached office or creative space which could easily be transformed into a spacious walk in closet. Step outside to your very own backyard oasis designed for relaxation and entertaining. Enjoy evenings under the sheltered gazebo patio, cozy up around the built-in fire pit, or get your hands dirty in the garden boxes. The backyard also features RV parking, underground sprinklers, a shed, and a 24x24 heated double detached garage. The recently painted exterior siding, revamped flower beds, and updated bathrooms round out the list of thoughtful upgrades. Ideally situated near schools,



shopping, restaurants, golf courses, and more,  
this move-in ready gem truly has it all.

Built in 1978

### Essential Information

MLS® #	A2214896
Price	\$385,000
Bedrooms	4
Bathrooms	2.00
Full Baths	2
Square Footage	989
Acres	0.16
Year Built	1978
Type	Residential
Sub-Type	Detached
Style	Bungalow
Status	Active

### Community Information

Address	283 Seven Persons Drive Sw
Subdivision	SW Southridge
City	Medicine Hat
County	Medicine Hat
Province	Alberta
Postal Code	T1B2C7

### Amenities

Parking Spaces	4
Parking	Double Garage Detached, Off Street
# of Garages	2

### Interior

Interior Features	Bar, Bookcases, Breakfast Bar, Built-in Features, Kitchen Island, Master Downstairs
Appliances	Dishwasher, Refrigerator, Stove(s)
Heating	Forced Air
Cooling	Central Air
Fireplace	Yes

# of Fireplaces	2
Fireplaces	Electric
Has Basement	Yes
Basement	Finished, Full

## Exterior

Exterior Features	Fire Pit
Lot Description	Back Lane, Back Yard, Landscaped, Underground Sprinklers
Roof	Asphalt Shingle
Construction	Stucco, Vinyl Siding, Wood Frame
Foundation	Poured Concrete

## Additional Information

Date Listed	April 25th, 2025
Days on Market	7
Zoning	R-LD

## Listing Details

Listing Office	CIR REALTY
----------------	------------

Data is supplied by Pillar 9â„¢ MLS® System. Pillar 9â„¢ is the owner of the copyright in its MLS® System. Data is deemed reliable but is not guaranteed accurate by Pillar 9â„¢. The trademarks MLS®, Multiple Listing Service® and the associated logos are owned by The Canadian Real Estate Association (CREA) and identify the quality of services provided by real estate professionals who are members of CREA. Used under license.