

# \$369,900 - 8911 62 Avenue, Grande Prairie

MLS® #A2213351

**\$369,900**

4 Bedroom, 4.00 Bathroom, 1,329 sqft

Residential on 0.09 Acres

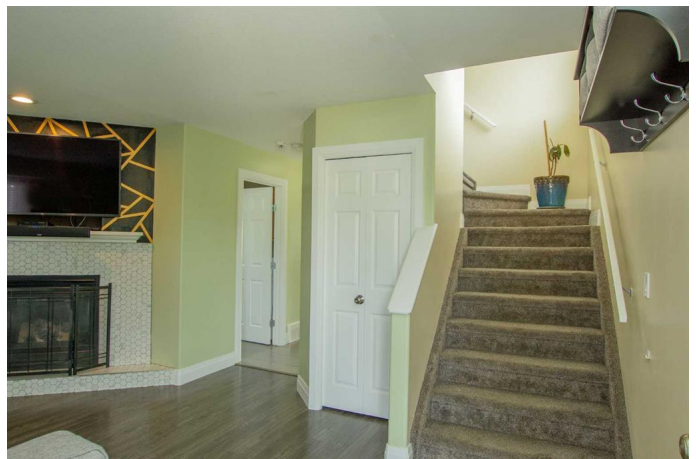
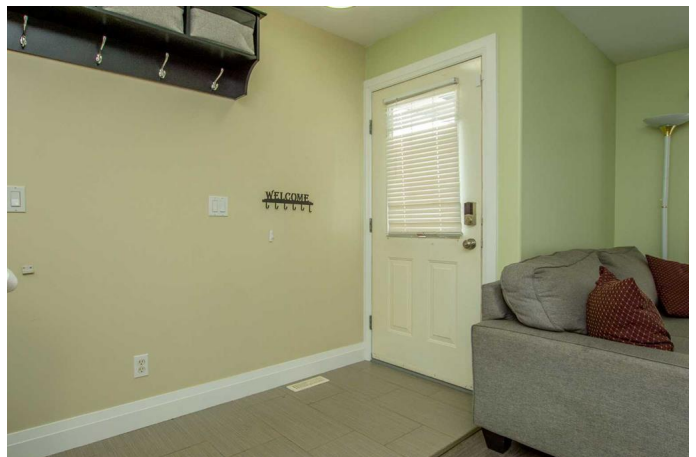
Countryside South., Grande Prairie, Alberta

A true jaw-dropping fully developed 4 BED 3.5 BATH HOME! Prepared to be WOWED with this property and at an affordable price. It would be hard to place your finger on a portion of this home that hasn't been updated from the original state. To start off, you will not find a kitchen of this caliber in this price range. Everything from high-end finishing's including back splash, counter tops throughout the kitchen and all the bathrooms, cabinets have been repainted. Main floor showcases an open concept living area with a spacious tile entrance, main floor laundry + half bath, and living room is complimented by gas fireplace. Upstairs hosts full bath, 2 bedrooms, and master with walk in closet with huge tiled shower. Basement is fully developed with 4th bedroom, full bathroom with tiled shower family room, storage and utility room. Back yard is SOUTH BACKING spreading natural light all day long it also boasts generous sized private deck, fenced yard, and detached garage. Driveway is large and in charge allowing for RV Parking!

Built in 2002

## Essential Information

MLS® #	A2213351
Price	\$369,900
Bedrooms	4
Bathrooms	4.00



Full Baths	3
Half Baths	1
Square Footage	1,329
Acres	0.09
Year Built	2002
Type	Residential
Sub-Type	Detached
Style	2 Storey
Status	Active

### **Community Information**

Address	8911 62 Avenue
Subdivision	Countryside South.
City	Grande Prairie
County	Grande Prairie
Province	Alberta
Postal Code	T8W 2P4

### **Amenities**

Parking Spaces	6
Parking	Single Garage Detached
# of Garages	1

### **Interior**

Interior Features	Ceiling Fan(s), No Smoking Home, Pantry, See Remarks, Storage
Appliances	Dishwasher, Dryer, Electric Stove, Microwave, Refrigerator, Washer
Heating	Forced Air, Natural Gas
Cooling	None
Fireplace	Yes
# of Fireplaces	1
Fireplaces	Gas
Has Basement	Yes
Basement	Finished, Full

### **Exterior**

Exterior Features	Other, Storage
Lot Description	Back Lane, Back Yard, Front Yard, Landscaped, Lawn
Roof	Asphalt Shingle
Construction	Mixed

Foundation                  Poured Concrete

### **Additional Information**

Date Listed                  April 21st, 2025

Days on Market            13

Zoning                        RS

### **Listing Details**

Listing Office               RE/MAX Grande Prairie

Data is supplied by Pillar 9â„¢ MLS® System. Pillar 9â„¢ is the owner of the copyright in its MLS® System. Data is deemed reliable but is not guaranteed accurate by Pillar 9â„¢. The trademarks MLS®, Multiple Listing Service® and the associated logos are owned by The Canadian Real Estate Association (CREA) and identify the quality of services provided by real estate professionals who are members of CREA. Used under license.