

\$279,500 - 9103 97 Avenue Avenue, Lac La Biche

MLS® #A2211601

\$279,500

3 Bedroom, 2.00 Bathroom, 1,120 sqft
Residential on 0.14 Acres

Lac La Biche, Lac La Biche, Alberta

Great starter home in central location. 3 bedroom home with a one bedroom suite (illegal) with separate entrance, in the basement. Brand new flooring and paint on the main floor and entrance way in this 1120 sq ft Bi - level. Features include attached garage, large bathroom with jetted tub on the main floor. The yard is fenced for kids and critters and has a large storage shed for bikes , toys and lawn and gardening equipment .

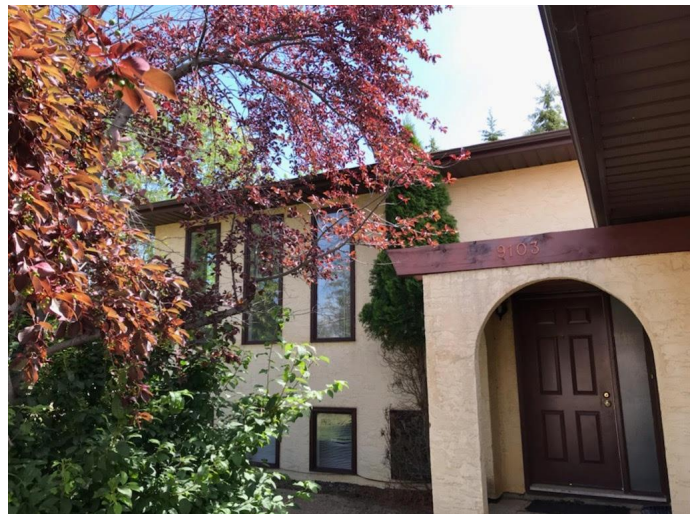
Built in 1983

Essential Information

MLS® #	A2211601
Price	\$279,500
Bedrooms	3
Bathrooms	2.00
Full Baths	2
Square Footage	1,120
Acres	0.14
Year Built	1983
Type	Residential
Sub-Type	Detached
Style	Bi-Level
Status	Active

Community Information

Address	9103 97 Avenue Avenue
Subdivision	Lac La Biche



City	Lac La Biche
County	Lac La Biche County
Province	Alberta
Postal Code	T0A 2C0

Amenities

Parking Spaces	3
Parking	Parking Pad, Single Garage Attached
# of Garages	1

Interior

Interior Features	Jetted Tub, See Remarks
Appliances	Electric Cooktop, Microwave, Oven-Built-In, Refrigerator, Washer/Dryer
Heating	Forced Air
Cooling	None
Has Basement	Yes
Basement	Exterior Entry, Finished, Full, Suite

Exterior

Exterior Features	Storage
Lot Description	Corner Lot, Lawn, Rectangular Lot
Roof	Asphalt Shingle
Construction	Wood Frame
Foundation	Wood

Additional Information

Date Listed	April 14th, 2025
Days on Market	68
Zoning	MEDIUM DENSITY HAMLET RES

Listing Details

Listing Office	RE/MAX LA BICHE REALTY
----------------	------------------------

Data is supplied by Pillar 9â„¢ MLS® System. Pillar 9â„¢ is the owner of the copyright in its MLS® System. Data is deemed reliable but is not guaranteed accurate by Pillar 9â„¢. The trademarks MLS®, Multiple Listing Service® and the associated logos are owned by The Canadian Real Estate Association (CREA) and identify the quality of services provided by real estate professionals who are members of CREA. Used under license.