

\$23,070 - 203 2 Avenue E, Hanna

MLS® #A2210639

\$23,070

0 Bedroom, 0.00 Bathroom,
Land on 0.09 Acres

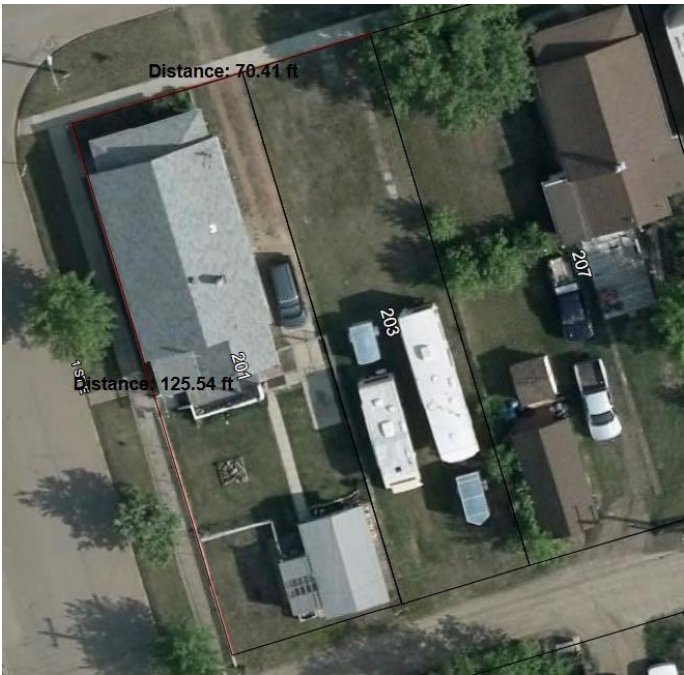
Hanna, Hanna, Alberta

This R-2 zoned residential lot offers the perfect opportunity to build your dream home—whether you prefer a custom build or a high-quality factory-built modular home.

Located in a well-established, welcoming community, the property is close to everything you need: shopping, parks, post office, banks, schools, and dining options are all just minutes away. You'll love the peaceful surroundings and open space, all while staying conveniently connected to everyday essentials.

Whether you're ready to build now or planning a future investment, this is a rare chance to own in a prime location.

Don't miss out—your future home starts here!



Essential Information

| | |
|-----------|------------------|
| MLS® # | A2210639 |
| Price | \$23,070 |
| Bathrooms | 0.00 |
| Acres | 0.09 |
| Type | Land |
| Sub-Type | Residential Land |
| Status | Active |

Community Information

| | |
|---------|----------------|
| Address | 203 2 Avenue E |
|---------|----------------|

| | |
|-------------|----------------|
| Subdivision | Hanna |
| City | Hanna |
| County | Special Area 2 |
| Province | Alberta |
| Postal Code | T0J1P0 |

Exterior

| | |
|-----------------|---------------|
| Lot Description | Irregular Lot |
|-----------------|---------------|

Additional Information

| | |
|----------------|------------------|
| Date Listed | April 10th, 2025 |
| Days on Market | 120 |
| Zoning | R2 |

Listing Details

| | |
|----------------|--------------------|
| Listing Office | Real Estate Centre |
|----------------|--------------------|

Data is supplied by Pillar 9â„¢ MLS® System. Pillar 9â„¢ is the owner of the copyright in its MLS® System. Data is deemed reliable but is not guaranteed accurate by Pillar 9â„¢. The trademarks MLS®, Multiple Listing Service® and the associated logos are owned by The Canadian Real Estate Association (CREA) and identify the quality of services provided by real estate professionals who are members of CREA. Used under license.