

\$224,900 - #202, 5101 51 Avenue, Vermilion

MLS® #A2207181

\$224,900

2 Bedroom, 2.00 Bathroom, 1,044 sqft

Residential on 0.00 Acres

Vermilion, Vermilion, Alberta

Welcome to the Maples Condominium (55+). This 1,044 SQ FT suite is situated on the north-end with valley-views in mind. Supplying 2 bedrooms, along with 2 bathrooms. Also accompanied with an underground heated parking stall, central elevator access, & another storage unit detached from the suite. Within the last 5 years, the unit has seen an array of updates: all new flooring, paint, and kitchen appliances. Sparkling clean, vacant, and ready for it's second ever owner.

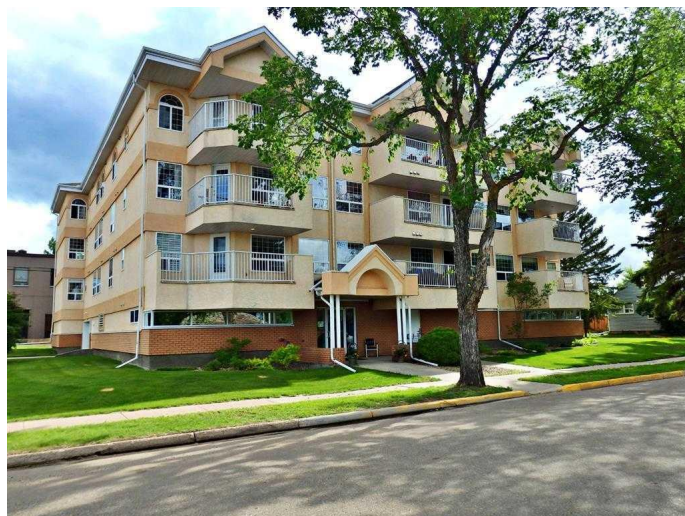
Built in 2001

Essential Information

MLS® #	A2207181
Price	\$224,900
Bedrooms	2
Bathrooms	2.00
Full Baths	2
Square Footage	1,044
Acres	0.00
Year Built	2001
Type	Residential
Sub-Type	Apartment
Style	Single Level Unit
Status	Active

Community Information

Address	#202, 5101 51 Avenue
Subdivision	Vermilion



City	Vermilion
County	Vermilion River, County of
Province	Alberta
Postal Code	T9X 1E3

Amenities

Amenities	Elevator(s), Parking, Recreation Room, Snow Removal, Storage, Trash
Parking Spaces	1
Parking	Underground

Interior

Interior Features	No Animal Home, No Smoking Home, Storage, Vinyl Windows
Appliances	Dishwasher, Refrigerator, Stove(s), Washer/Dryer, Window Coverings
Heating	Baseboard
Cooling	Central Air
# of Stories	3

Exterior

Exterior Features	Lighting, Other
Lot Description	Few Trees, Lawn
Construction	Concrete, Mixed, Stucco

Additional Information

Date Listed	April 10th, 2025
Days on Market	27
Zoning	C1

Listing Details

Listing Office	Vermilion Realty
----------------	------------------

Data is supplied by Pillar 9â„¢ MLSÂ® System. Pillar 9â„¢ is the owner of the copyright in its MLSÂ® System. Data is deemed reliable but is not guaranteed accurate by Pillar 9â„¢. The trademarks MLSÂ®, Multiple Listing ServiceÂ® and the associated logos are owned by The Canadian Real Estate Association (CREA) and identify the quality of services provided by real estate professionals who are members of CREA. Used under license.