

\$229,000 - 14, 701413 Range Road 72, Rural Grande Prairie No. 1, County of

MLS® #A2206425

\$229,000

0 Bedroom, 0.00 Bathroom,
Land on 2.49 Acres

Richmond Hill Estates., Rural Grande Prairie
No. 1, County of, Alberta

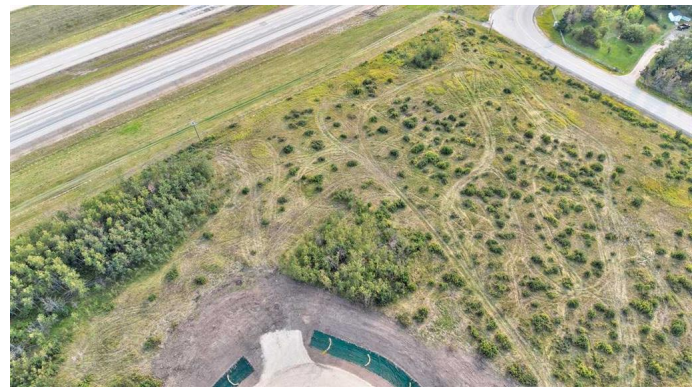
Brand new development in Richmond Hill Estates! Minutes away from Grande Prairie. This community is a sought after location where families have settled for years for the convenience of location as well as the stunning views both East and West. Buy a lot, Design your Plan, Connect with a Builder and make your dreams come true. Lots range of light tree cover and partially open, developing made easy. Need help designing, drawing, or coordinating we can help connect you to the right people. Have your agent reach out to us today and book your showing to explore your future yard.

Essential Information

MLS® #	A2206425
Price	\$229,000
Bathrooms	0.00
Acres	2.49
Type	Land
Sub-Type	Residential Land
Status	Active

Community Information

Address	14, 701413 Range Road 72
Subdivision	Richmond Hill Estates.
City	Rural Grande Prairie No. 1, County of



County	Grande Prairie No. 1, County of
Province	Alberta
Postal Code	T8W5J6

Additional Information

Date Listed	March 27th, 2025
Days on Market	136
Zoning	CR-5

Listing Details

Listing Office	KIC Realty
----------------	------------

Data is supplied by Pillar 9â„¢ MLS® System. Pillar 9â„¢ is the owner of the copyright in its MLS® System. Data is deemed reliable but is not guaranteed accurate by Pillar 9â„¢. The trademarks MLS®, Multiple Listing Service® and the associated logos are owned by The Canadian Real Estate Association (CREA) and identify the quality of services provided by real estate professionals who are members of CREA. Used under license.