

# \$424,000 - 8845 114 Avenue, Grande Prairie

MLS® #A2205621

## \$424,000

4 Bedroom, 3.00 Bathroom, 1,223 sqft

Residential on 0.18 Acres

Crystal Heights., Grande Prairie, Alberta

Take a look at this 1200+ sq ft home on a corner lot in Crystal Heights. There are 2 schools within walking distance as well as a number of playgrounds. Upstairs this home features 2 beds and 2 full baths, a spacious sized family room and a large open kitchen overlooking the rear deck. . In the walkout basement there are 2 beds, a full bath and a large family room with a gas fireplace. The garage is 24x24.

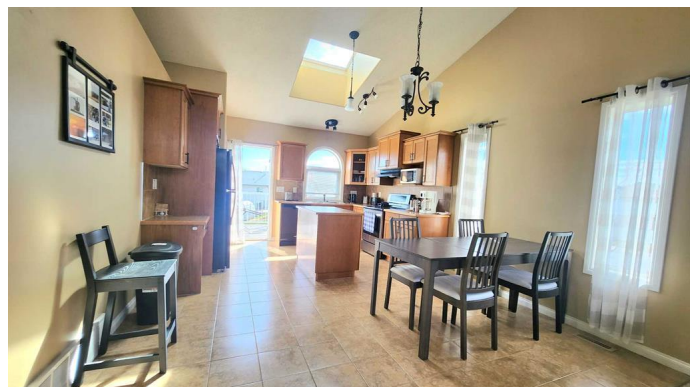
Built in 2006

### Essential Information

MLS® #	A2205621
Price	\$424,000
Bedrooms	4
Bathrooms	3.00
Full Baths	3
Square Footage	1,223
Acres	0.18
Year Built	2006
Type	Residential
Sub-Type	Detached
Style	Bi-Level
Status	Active

### Community Information

Address	8845 114 Avenue
Subdivision	Crystal Heights.



City	Grande Prairie
County	Grande Prairie
Province	Alberta
Postal Code	T8X 0A5

### Amenities

Parking Spaces	4
Parking	Double Garage Attached
# of Garages	2

### Interior

Interior Features	See Remarks
Appliances	Dishwasher, Range Hood, Refrigerator, Washer/Dryer
Heating	Forced Air
Cooling	None
Fireplace	Yes
# of Fireplaces	1
Fireplaces	Basement, Gas
Has Basement	Yes
Basement	Finished, Full

### Exterior

Exterior Features	Other
Lot Description	Corner Lot
Roof	Asphalt Shingle
Construction	Vinyl Siding
Foundation	ICF Block

### Additional Information

Date Listed	March 25th, 2025
Days on Market	84
Zoning	RR

### Listing Details

Listing Office	RE/MAX Grande Prairie
----------------	-----------------------

Data is supplied by Pillar 9â„¸ MLSÂ® System. Pillar 9â„¸ is the owner of the copyright in its MLSÂ® System. Data is deemed reliable but is not guaranteed accurate by Pillar 9â„¸. The trademarks MLSÂ®, Multiple Listing ServiceÂ® and the associated logos are owned by The Canadian Real Estate Association (CREA) and identify the quality of services provided by real estate professionals who are members of CREA. Used under license.