

\$445,000 - 19 Mt Rundle Way W, Lethbridge

MLS® #A2202522

\$445,000

4 Bedroom, 3.00 Bathroom, 1,173 sqft
Residential on 0.10 Acres

Mountain Heights, Lethbridge, Alberta

Visit REALTOR® website for additional information.

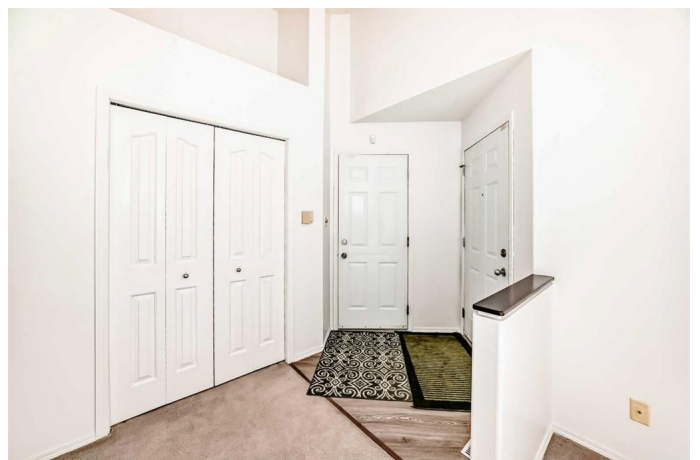
Family friendly bungalow that backs onto the Dr Gerald B Probe Elementary school.

Welcome to 19 Mt. Rundle Way W! This charming 4-bedroom, 3-bathroom home is located in a quiet neighborhood, close to schools. The open-concept main floor features a sunken living room with high ceilings, a well-laid-out kitchen, and a dining room with ample natural light. The primary bedroom has an en-suite and walk-in closet. Enjoy a fully finished basement with a large family room, bedroom, and bath. The fenced backyard, garden space, and rear deck offer tranquility. Freshly painted throughout!

Built in 1998

Essential Information

MLS® #	A2202522
Price	\$445,000
Bedrooms	4
Bathrooms	3.00
Full Baths	3
Square Footage	1,173
Acres	0.10
Year Built	1998
Type	Residential
Sub-Type	Detached
Style	Bi-Level



Status Active

Community Information

Address 19 Mt Rundle Way W
Subdivision Mountain Heights
City Lethbridge
County Lethbridge
Province Alberta
Postal Code T1K 7E9

Amenities

Parking Spaces 4
Parking Double Garage Attached, Off Street
of Garages 2

Interior

Interior Features Ceiling Fan(s), Central Vacuum, High Ceilings, Laminate Counters, Storage, Walk-In Closet(s), Bidet
Appliances Central Air Conditioner, Dishwasher, Dryer, Electric Stove, Garage Control(s), Refrigerator, Washer, Gas Water Heater
Heating Forced Air
Cooling Central Air
Has Basement Yes
Basement Finished, Full

Exterior

Exterior Features Garden, Rain Gutters
Lot Description Back Yard, Backs on to Park/Green Space, Front Yard, Garden, Landscaped, Lawn, Rectangular Lot
Roof Asphalt Shingle
Construction Stucco
Foundation Poured Concrete

Additional Information

Date Listed March 15th, 2025
Days on Market 57
Zoning R-L

Listing Details

Listing Office PG Direct Realty Ltd.

Data is supplied by Pillar 9â„¸ MLSÂ® System. Pillar 9â„¸ is the owner of the copyright in its MLSÂ® System. Data is deemed reliable but is not guaranteed accurate by Pillar 9â„¸. The trademarks MLSÂ®, Multiple Listing ServiceÂ® and the associated logos are owned by The Canadian Real Estate Association (CREA) and identify the quality of services provided by real estate professionals who are members of CREA. Used under license.