

\$729,900 - 9528 98 Avenue, Grande Prairie

MLS® #A2201135

\$729,900

6 Bedroom, 6.00 Bathroom, 2,512 sqft

Residential on 0.01 Acres

Smith., Grande Prairie, Alberta

Full Executive Duplex on One Title â€“ Under Construction, Projected Completion August 2025

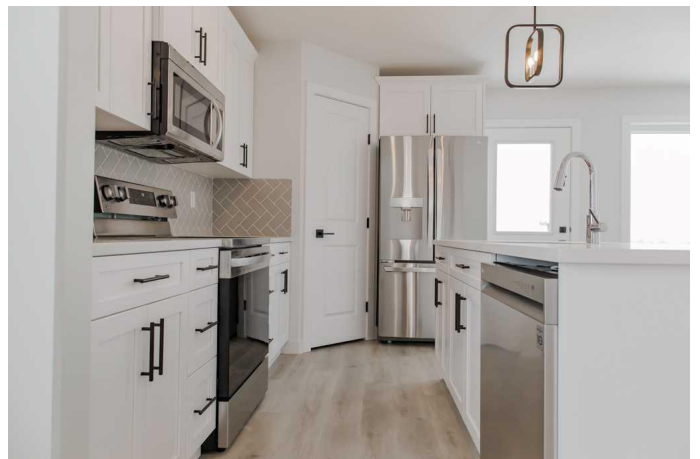
This modern luxury duplex offers a prime investment opportunity, featuring both sides on one title, allowing for a single residential mortgage and greater flexibility for acquiring additional properties. With similar units renting for \$2,500 per side, this property presents a strong rental income potential.

Property Features:

- Total of 6 bedrooms, 4 full bathrooms, and 2 half bathrooms
- Each unit includes: 3 bedrooms, 2.5 bathrooms, open-concept layout
- Potential for additional development: Unfinished basement allows for up to 4 additional bedrooms and 2 full bathrooms
- Large lot with alley access: Opportunity for additional parking, ideal for crew housing, excellent location in Smith just north of a new rec center, a block to a circle K and close to a bus route, walking distance to downtown and the CO-OP grocery store.

Interior & Design

- Contemporary exterior with modern curb appeal
- High-end kitchen finishes, including quartz countertops, tile backsplash, pendant lighting, soft-close shaker-style cabinets, and vinyl plank flooring
- Stainless Kitchen Appliances included for a



move-in-ready experience

-Spacious primary suite: 12'8" x 11'10" with a walk-in closet and 4-piece ensuite

-Second floor laundry

Energy Efficiency & Added Value:

-Hot water on demand

-High-efficiency furnace

-Low-E argon-filled double-pane windows

-Lifetime fiberglass shingles

-Separate power and gas meters for each unit

Garage & Exterior:

-Two 12' x 24' garages, insulated, drywalled, and fire-taped

Wi-Fi-enabled garage door openers for convenience

-This duplex is currently under construction with a projected completion date of August 2025. Sample pictures are from a previous build.

Built in 2025

Essential Information

| | |
|----------------|------------------------|
| MLS® # | A2201135 |
| Price | \$729,900 |
| Bedrooms | 6 |
| Bathrooms | 6.00 |
| Full Baths | 4 |
| Half Baths | 2 |
| Square Footage | 2,512 |
| Acres | 0.01 |
| Year Built | 2025 |
| Type | Residential |
| Sub-Type | Duplex |
| Style | 2 Storey, Side by Side |
| Status | Active |

Community Information

| | |
|-------------|----------------|
| Address | 9528 98 Avenue |
| Subdivision | Smith. |

| | |
|-------------|----------------|
| City | Grande Prairie |
| County | Grande Prairie |
| Province | Alberta |
| Postal Code | T8V 0N9 |

Amenities

| | |
|----------------|--|
| Parking Spaces | 6 |
| Parking | Concrete Driveway, Double Garage Attached, Garage Door Opener, Parking Pad |
| # of Garages | 1 |

Interior

| | |
|-------------------|---|
| Interior Features | Breakfast Bar, High Ceilings, Kitchen Island, No Animal Home, No Smoking Home, Open Floorplan, Quartz Counters, Recessed Lighting, Tankless Hot Water, Stone Counters |
| Appliances | Dishwasher, Electric Range, Microwave Hood Fan, Refrigerator, Tankless Water Heater |
| Heating | Forced Air, Natural Gas |
| Cooling | None |
| Has Basement | Yes |
| Basement | Full, Unfinished |

Exterior

| | |
|-------------------|----------------------|
| Exterior Features | None |
| Lot Description | Street Lighting |
| Roof | Fiberglass, Shingle |
| Construction | Concrete, Wood Frame |
| Foundation | Poured Concrete |

Additional Information

| | |
|----------------|------------------|
| Date Listed | March 10th, 2025 |
| Days on Market | 55 |
| Zoning | RG |

Listing Details

| | |
|----------------|---|
| Listing Office | Sutton Group Grande Prairie Professionals |
|----------------|---|

Data is supplied by Pillar 9â„¢ MLS® System. Pillar 9â„¢ is the owner of the copyright in its MLS® System. Data is deemed reliable but is not guaranteed accurate by Pillar 9â„¢. The trademarks MLS®, Multiple Listing Service® and the associated logos are owned by The Canadian Real Estate Association (CREA) and identify the quality of services provided by real estate professionals who are members of CREA. Used under license.