

\$150,000 - 61 Pebble Creek Cove, Raymond

MLS® #A2201013

\$150,000

0 Bedroom, 0.00 Bathroom,
Land on 0.57 Acres

NONE, Raymond, Alberta

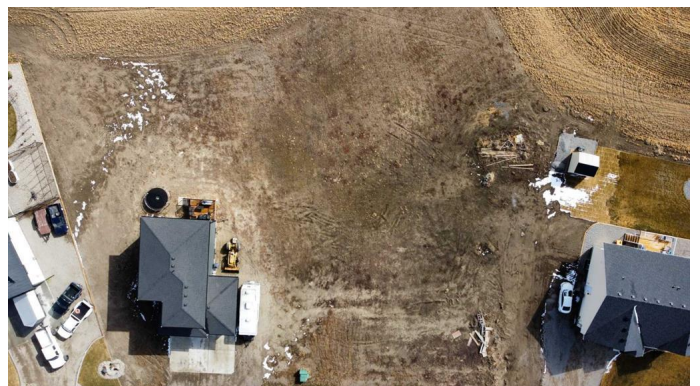
This 0.57-acre lot in the growing subdivision of Stonegate Meadows offers the perfect spot to put down roots, with architectural guidelines ensuring a beautiful, well-planned neighbourhood. Raymond is a thriving, family-friendly town with all the essentials—schools (K-12) - the brand new High School is currently being built not far from this lot, a 9-hole golf course, parks, sports fields, a library, medical services, a grocery store, and local shops. Plus, it's home to an incredible outdoor pool, a vibrant rodeo, and Canada Day celebration. Just 20 minutes from Lethbridge, you get small-town charm with city convenience. Lot is fully serviced and ready for your dream home.

Essential Information

| | |
|-----------|------------------|
| MLS® # | A2201013 |
| Price | \$150,000 |
| Bathrooms | 0.00 |
| Acres | 0.57 |
| Type | Land |
| Sub-Type | Residential Land |
| Status | Active |

Community Information

| | |
|-------------|----------------------|
| Address | 61 Pebble Creek Cove |
| Subdivision | NONE |
| City | Raymond |



| | |
|-------------|-------------------------|
| County | Warner No. 5, County of |
| Province | Alberta |
| Postal Code | T0K 2S0 |

Additional Information

| | |
|----------------|---------------------|
| Date Listed | March 10th, 2025 |
| Days on Market | 155 |
| Zoning | General Residential |

Listing Details

| | |
|----------------|----------------------------|
| Listing Office | Lethbridge Real Estate.com |
|----------------|----------------------------|

Data is supplied by Pillar 9â„¢ MLS® System. Pillar 9â„¢ is the owner of the copyright in its MLS® System. Data is deemed reliable but is not guaranteed accurate by Pillar 9â„¢. The trademarks MLS®, Multiple Listing Service® and the associated logos are owned by The Canadian Real Estate Association (CREA) and identify the quality of services provided by real estate professionals who are members of CREA. Used under license.