

\$92,000 - Highway 642 Range Rd 270, Rural Sturgeon County

MLS® #A2200277

\$92,000

0 Bedroom, 0.00 Bathroom,
Land on 2.47 Acres

NONE, Rural Sturgeon County, Alberta

Property for Sale by UNRESERVED Auction
â€“ May 27-29, 2025

This property will be sold UNRESERVED via auction, starting May 27-29, 2025. Bidding will take place through the Team Auctions website, where full terms and conditions are available. This is lot 2 on title and at the auction it is marked as Parcel 2.

What does "Unreserved" Mean?

Unlike traditional listings, the property will be sold to the highest bidderâ€“no minimum price. While the asking price is listed at \$92,000, bidding may end higher or lower. Please note, this is not a starting bid, and the final price is determined by the auction process.

Property Details:

Size: 2.47 acres

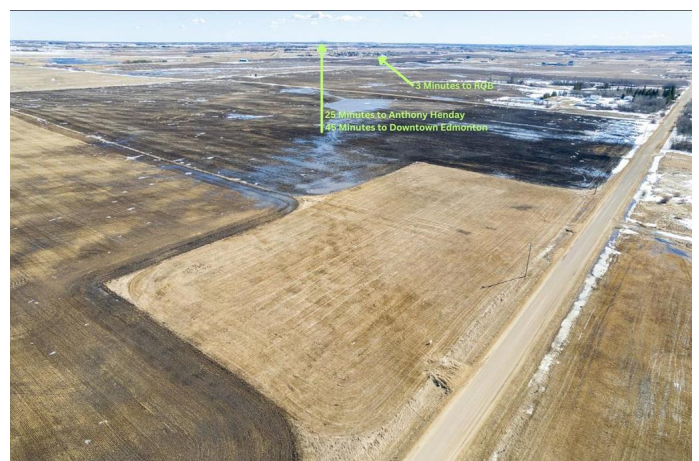
Location: Just off Secondary Highway 642, only 15 minutes from St. Albert and within half an hour of West Edmonton, Morinville, Spruce Grove, and Stony Plain.

Topography: A flat, level lot surrounded by peaceful farmland, ideal for various uses.

Utilities: Power is available near the property line, and city water is accessible through the Riviere Qui Barre water station.

Donâ€™t miss this rare opportunity to secure a beautiful property at auction!

Check out A 2200296 as well as there are two



of these spacious lots and they are located side by side, each offering 2.47 acres of prime land. Whether you're looking to invest in one or both, these properties present great potential. For details on the second lot, refer to A2200296

Essential Information

MLS® #	A2200277
Price	\$92,000
Bathrooms	0.00
Acres	2.47
Type	Land
Sub-Type	Residential Land
Status	Active

Community Information

Address	Highway 642 Range Rd 270
Subdivision	NONE
City	Rural Sturgeon County
County	Sturgeon County
Province	Alberta
Postal Code	T0G 1Y0

Additional Information

Date Listed	March 7th, 2025
Days on Market	55
Zoning	AG

Listing Details

Listing Office	Real Estate Centre - Coaldale
----------------	-------------------------------

Data is supplied by Pillar 9â„¢ MLS® System. Pillar 9â„¢ is the owner of the copyright in its MLS® System. Data is deemed reliable but is not guaranteed accurate by Pillar 9â„¢. The trademarks MLS®, Multiple Listing Service® and the associated logos are owned by The Canadian Real Estate Association (CREA) and identify the quality of services provided by real estate professionals who are members of CREA. Used under license.