

\$1,556,973 - Nw-36-51-27-4, Rural Parkland County

MLS® #A2189174

\$1,556,973

0 Bedroom, 0.00 Bathroom,
Land on 157.27 Acres

Woodland Park_CPAR, Rural Parkland
County, Alberta

Click brochure link for more information** Five
parcels of development land ranging from +/-
37.90 acres to

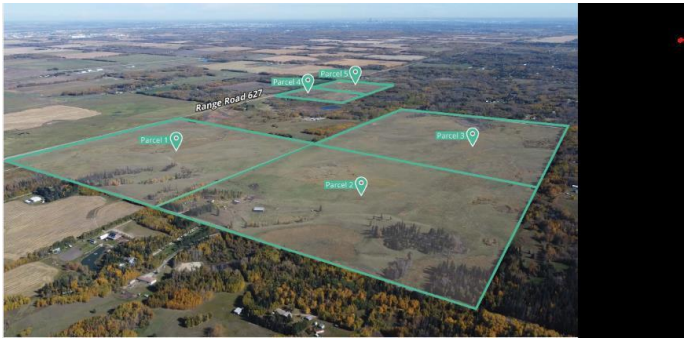
+/- 158.00 acres in size. Located in
Parkland County, one of Alberta's largest
and most

densely population municipalities

Located Situated along Range Road 627 providing
excellent access to

major transportation routes via Range Road
627 and Highway 60

Approved Area Structure Plan with mixed
use and country residential zoning. This is
parcel 1



Essential Information

MLS® #	A2189174
Price	\$1,556,973
Bathrooms	0.00
Acres	157.27
Type	Land
Sub-Type	Residential Land
Status	Active

Community Information

Address	Nw-36-51-27-4
Subdivision	Woodland Park_CPAR
City	Rural Parkland County
County	Parkland County

Province	Alberta
Postal Code	T7X3M9

Additional Information

Date Listed	January 20th, 2025
Days on Market	200
Zoning	CR - Country Residential

Listing Details

Listing Office	Honestdoor Inc.
----------------	-----------------

Data is supplied by Pillar 9â„¢ MLS® System. Pillar 9â„¢ is the owner of the copyright in its MLS® System. Data is deemed reliable but is not guaranteed accurate by Pillar 9â„¢. The trademarks MLS®, Multiple Listing Service® and the associated logos are owned by The Canadian Real Estate Association (CREA) and identify the quality of services provided by real estate professionals who are members of CREA. Used under license.