

\$1,500 - Lot 8a, 9415 144 Avenue, Rural Grande Prairie No. 1, County of

MLS® #A2180974

\$1,500

0 Bedroom, 0.00 Bathroom,
Land on 2.62 Acres

Crossroads South, Rural Grande Prairie No. 1,
County of, Alberta

For lease Lot 8A (West Lot): 2.62 Acre lot
zoned RM-2 (Rural Medium Industrial). McRae
Industrial Park. Fenced & Gravelled.
\$1,500.00 per acre for a total of \$3,930.00
plus GST per month. Additional Rent is
\$1,000.00 per month plus GST. Total Monthly
Rent Payment is 5,176.50 including GST.

Essential Information

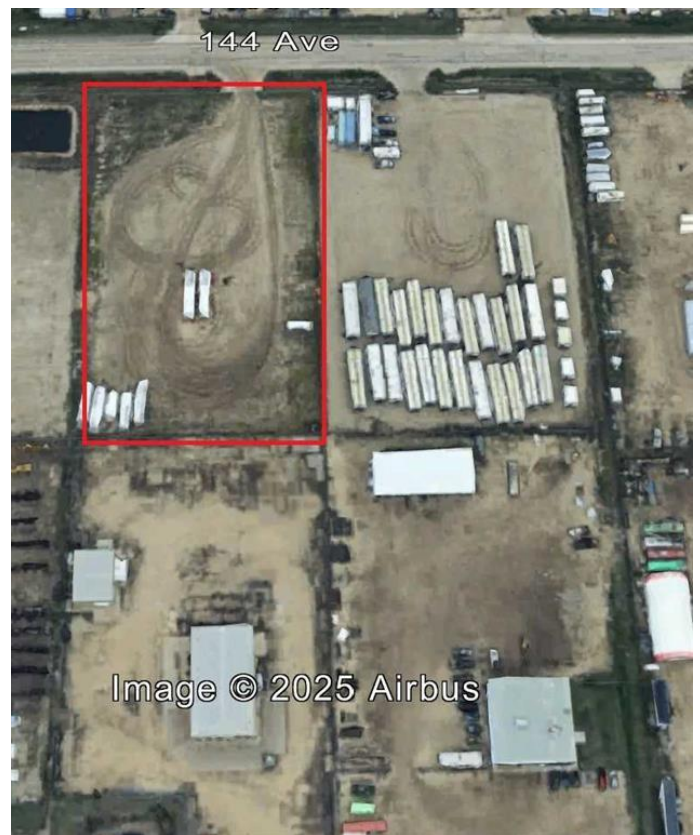
| | |
|-----------|-----------------|
| MLS® # | A2180974 |
| Price | \$1,500 |
| Bathrooms | 0.00 |
| Acres | 2.62 |
| Type | Land |
| Sub-Type | Industrial Land |
| Status | Active |

Community Information

| | |
|-------------|-------------------------------|
| Address | Lot 8a, 9415 144 Avenue |
| Subdivision | Crossroads South |
| City | Rural Grande Prairie No. 1, C |
| County | Grande Prairie No. 1, County |
| Province | Alberta |
| Postal Code | T8V 2N9 |

Additional Information

| | |
|-------------|---------------------|
| Date Listed | November 25th, 2024 |
|-------------|---------------------|



© GPAAR MLS® GP099977

| | |
|----------------|------|
| Days on Market | 250 |
| Zoning | RM-2 |

Listing Details

| | |
|----------------|-----------------------|
| Listing Office | RE/MAX Grande Prairie |
|----------------|-----------------------|

Data is supplied by Pillar 9â„¢ MLS® System. Pillar 9â„¢ is the owner of the copyright in its MLS® System. Data is deemed reliable but is not guaranteed accurate by Pillar 9â„¢. The trademarks MLS®, Multiple Listing Service® and the associated logos are owned by The Canadian Real Estate Association (CREA) and identify the quality of services provided by real estate professionals who are members of CREA. Used under license.