

# \$166,600 - 36 714072 Range Road 73, Rural Grande Prairie No. 1, County of

MLS® #A2170901

**\$166,600**

0 Bedroom, 0.00 Bathroom,  
Land on 3.87 Acres

Westridge Estates., Rural Grande Prairie No. 1, County of, Alberta

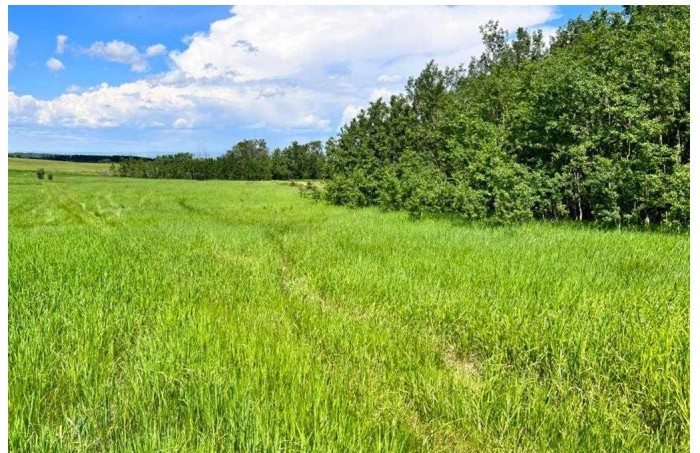
BUILD YOUR DREAM HOME in this beautiful WESTRIDGE ESTATES location. Lot 36 in this very welcoming subdivision features 3.87 acres. Paved from GP into the subdivision, within 10 minutes of GP. Power and gas is next to the road. Enjoy a drive to view the property featuring open lot with mature trees to the eastside of the property. Restrictive covenants do apply. Zoned CR2 with the County of Grande Prairie. Call your realtor for more information!

## Essential Information

MLS® #	A2170901
Price	\$166,600
Bathrooms	0.00
Acres	3.87
Type	Land
Sub-Type	Residential Land
Status	Active

## Community Information

Address	36 714072 Range Road 73
Subdivision	Westridge Estates.
City	Rural Grande Prairie No. 1, County of
County	Grande Prairie No. 1, County of
Province	Alberta



Postal Code            T8V 3A7

**Additional Information**

Date Listed            October 11th, 2024  
Days on Market        251  
Zoning                  CR-2

**Listing Details**

Listing Office            Royal LePage - The Realty Group

Data is supplied by Pillar 9â„¢ MLS® System. Pillar 9â„¢ is the owner of the copyright in its MLS® System. Data is deemed reliable but is not guaranteed accurate by Pillar 9â„¢. The trademarks MLS®, Multiple Listing Service® and the associated logos are owned by The Canadian Real Estate Association (CREA) and identify the quality of services provided by real estate professionals who are members of CREA. Used under license.