

# \$1,550,000 - Ne-14-72-5-w6 .., Rural Grande Prairie No. 1, County of

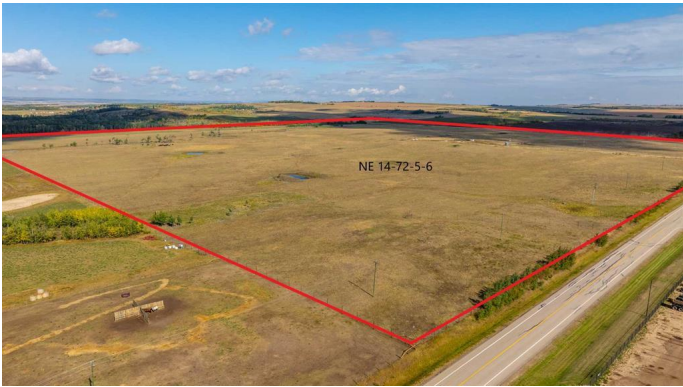
MLS® #A2165280

**\$1,550,000**

0 Bedroom, 0.00 Bathroom,  
Land on 159.00 Acres

Hawker Industrial Park, Rural Grande Prairie  
No. 1, County of, Alberta

This 159-acre AG-zoned property is a rare investment opportunity, located just 4 minutes east of Grande Prairie on Range Road 51 and a quarter section from Highway 43. With an approved Area Structure Plan (ASP) and proximity to the Hawker Industrial Parks, this quarter offers immense potential for future development. Nearby infrastructure—including municipal water, Telus fiber, Atco gas, and electricity—reduces costs and accelerates timelines, making this property ideal for developers, investors and farmers alike. Donâ€™t miss out on this rare opportunity! Contact a Commercial Realtor® today to explore this prime development-ready land.



## Essential Information

MLS® #	A2165280
Price	\$1,550,000
Bathrooms	0.00
Acres	159.00
Type	Land
Sub-Type	Commercial Land
Status	Active

## Community Information

Address	Ne-14-72-5-w6 ..
---------	------------------

Subdivision	Hawker Industrial Park
City	Rural Grande Prairie No. 1, County of
County	Grande Prairie No. 1, County of
Province	Alberta
Postal Code	T8X 0T1

### **Additional Information**

Date Listed	January 9th, 2025
Days on Market	212
Zoning	AG

### **Listing Details**

Listing Office	RE/MAX Grande Prairie
----------------	-----------------------

Data is supplied by Pillar 9â„¢ MLS® System. Pillar 9â„¢ is the owner of the copyright in its MLS® System. Data is deemed reliable but is not guaranteed accurate by Pillar 9â„¢. The trademarks MLS®, Multiple Listing Service® and the associated logos are owned by The Canadian Real Estate Association (CREA) and identify the quality of services provided by real estate professionals who are members of CREA. Used under license.