

\$1,401,825 - Sw-15-71-5-w6, Rural Grande Prairie No. 1, County of

MLS® #A2123374

\$1,401,825

0 Bedroom, 0.00 Bathroom,
Land on 146.91 Acres

NONE, Rural Grande Prairie No. 1, County of,
Alberta

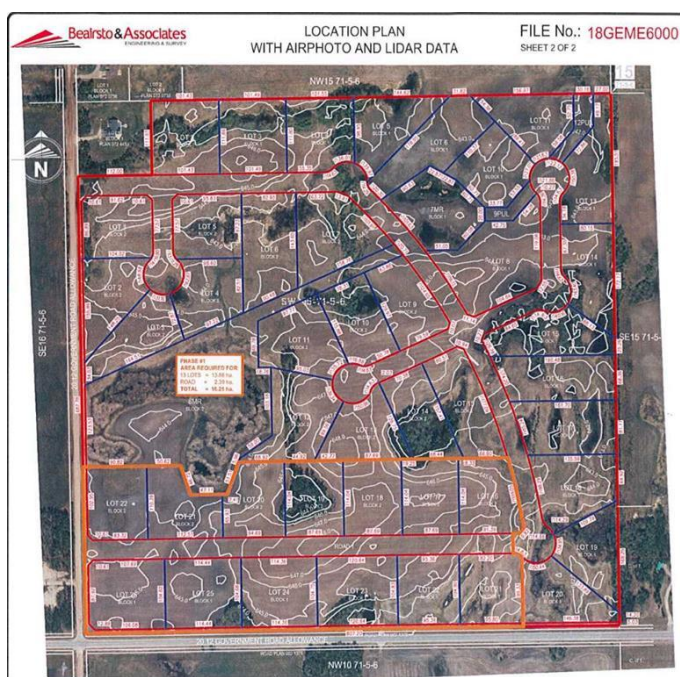
DEVELOPMENT PARCEL! Welcome to the new acreage community just SE of Grande Prairie - Heritage Estates! 146.91 acres East of Signature Falls, Sandy Ridge Estates, etc. along 68 Avenue and RR53. Wetland Assessment completed and subdivision plan approved by County. First phase approval has 13 lots ranging from 2.47 acres -3.12 acres each. The quarter to the East is also available for sale and would be ideal for future phases (MLS# A2123359).

Essential Information

MLS® #	A2123374
Price	\$1,401,825
Bathrooms	0.00
Acres	146.91
Type	Land
Sub-Type	Residential Land
Status	Active

Community Information

Address	Sw-15-71-5-w6
Subdivision	NONE
City	Rural Grande Prairie No. 1, County of
County	Grande Prairie No. 1, County of
Province	Alberta



Postal Code T8X 4A2

Additional Information

Date Listed May 2nd, 2024
Days on Market 465
Zoning AG

Listing Details

Listing Office RE/MAX Grande Prairie

Data is supplied by Pillar 9â„¢ MLS® System. Pillar 9â„¢ is the owner of the copyright in its MLS® System. Data is deemed reliable but is not guaranteed accurate by Pillar 9â„¢. The trademarks MLS®, Multiple Listing Service® and the associated logos are owned by The Canadian Real Estate Association (CREA) and identify the quality of services provided by real estate professionals who are members of CREA. Used under license.